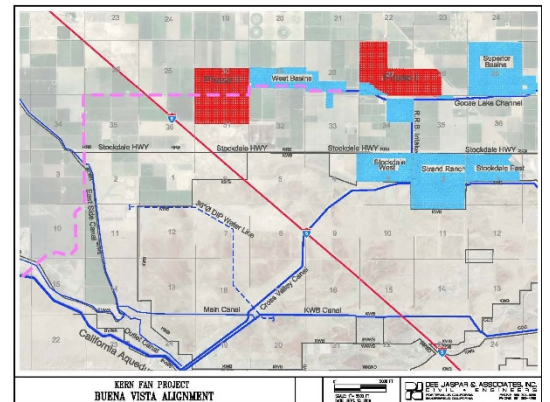


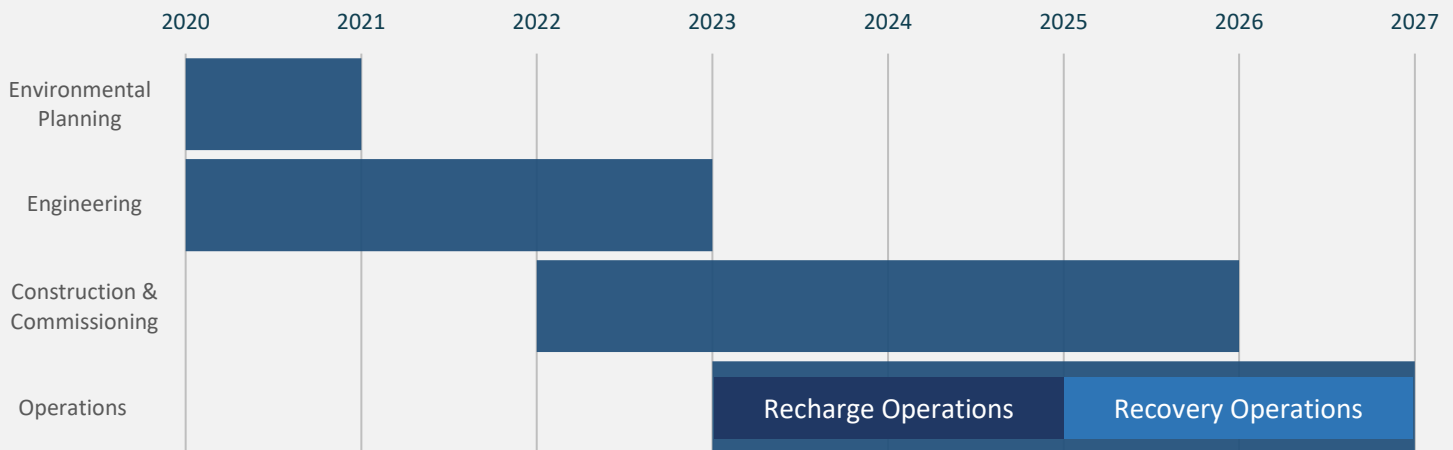
FACT SHEET

KERN FAN GROUNDWATER STORAGE PROJECT

The Kern Fan Groundwater Storage Project consists of construction and operation of shallow percolation ponds totaling approximately 1,150 acres, levees surrounding the proposed percolation ponds, up to a total of 12 groundwater extraction wells, water conveyance facilities, 5 pumping plants and gravity turnouts, and groundwater monitoring wells. The project is located at the western portion of the Rosedale-Rio Bravo Water Storage District and is adjoined by two groundwater banking projects, the Kern Water Bank and the Rosedale-Rio Bravo Conjunctive-Use Project. Operation of the Project includes storing water in underground aquifers for later recovery. It is expected that upwards of 100,000 AF of water could be stored by the Project during any given year. It is expected that up to 50,000 AF of water could be extracted in any given year. The Project also includes upwards of 500 cfs of conveyance capacity from the California Aqueduct for recharge as well as return of recovery capacity back to the California Aqueduct.



PROJECT SCHEDULE



PROJECT COSTS

Recharge Capacity	100,000 AF/yr
Recovery Capacity	50,000 AF/yr
Project Cost	\$200M
Recharge Cost	\$845k/cfs
Recovery Cost	\$637k/cfs

AFFORDABILITY OVERVIEW