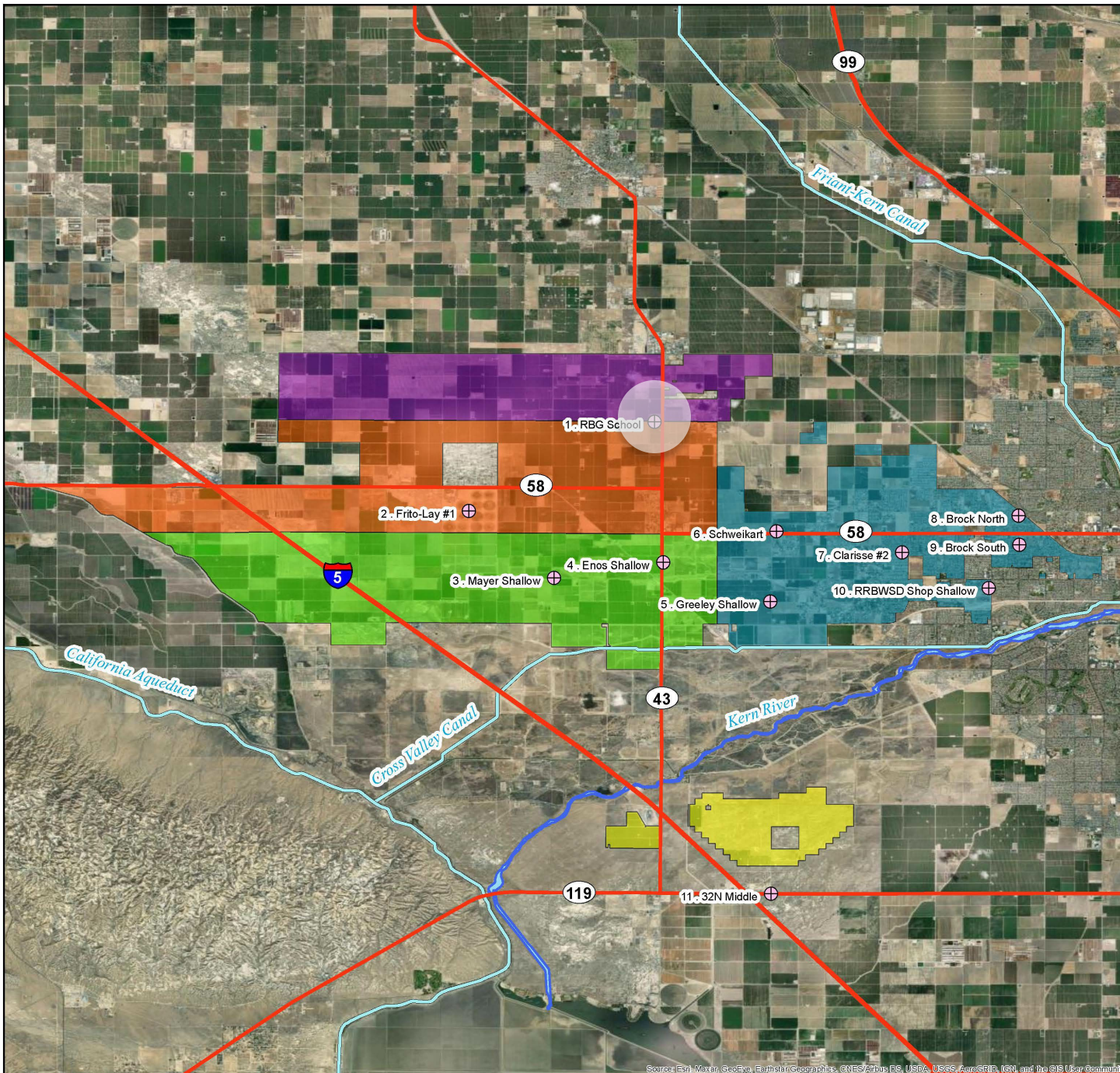


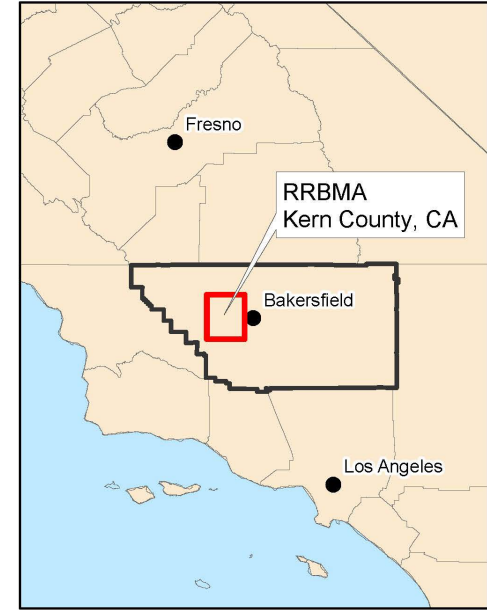
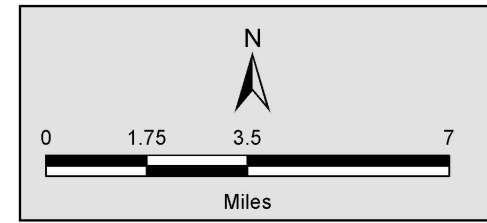
RRBMA Monitoring Areas - Water Quality Wells



Legend

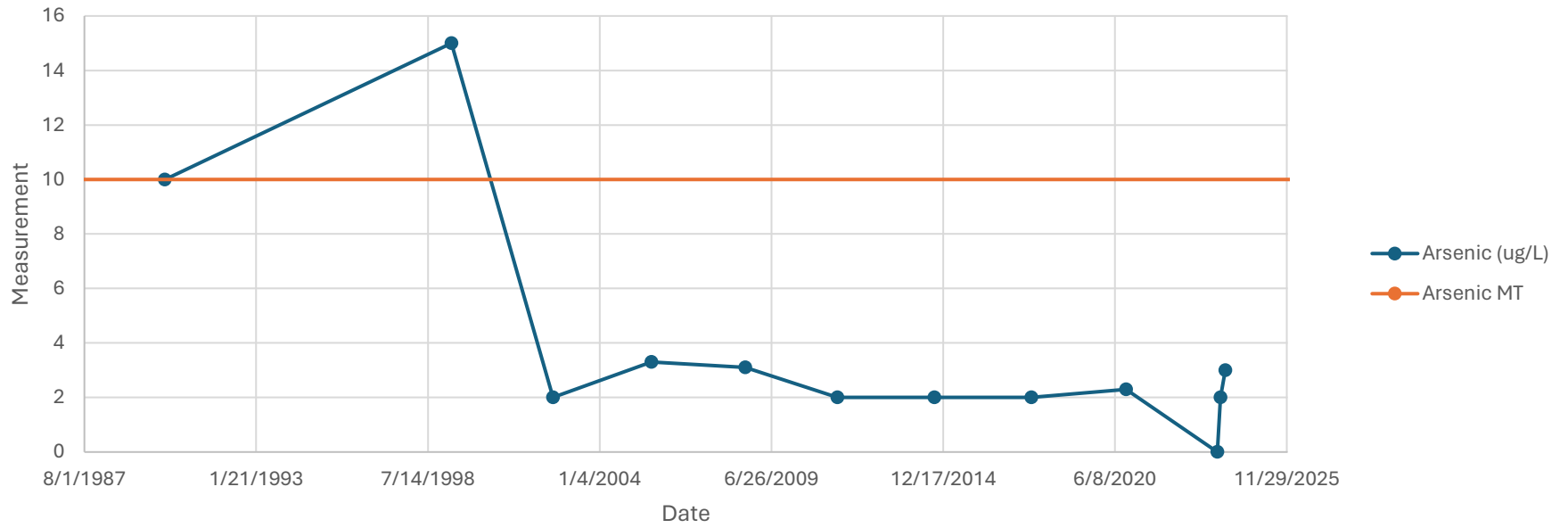
- ⊕ RRBMA RMW (Water Quality)
- ▭ Kern River
- ▭ North Monitoring Area
- ▭ Central Monitoring Area
- ▭ South Monitoring Area
- ▭ East Monitoring Area
- ▭ South of the River Monitoring Area
- ▬ Major Highways
- ▬ Major Conveyance Facilities

RMW = Representative Monitoring Well

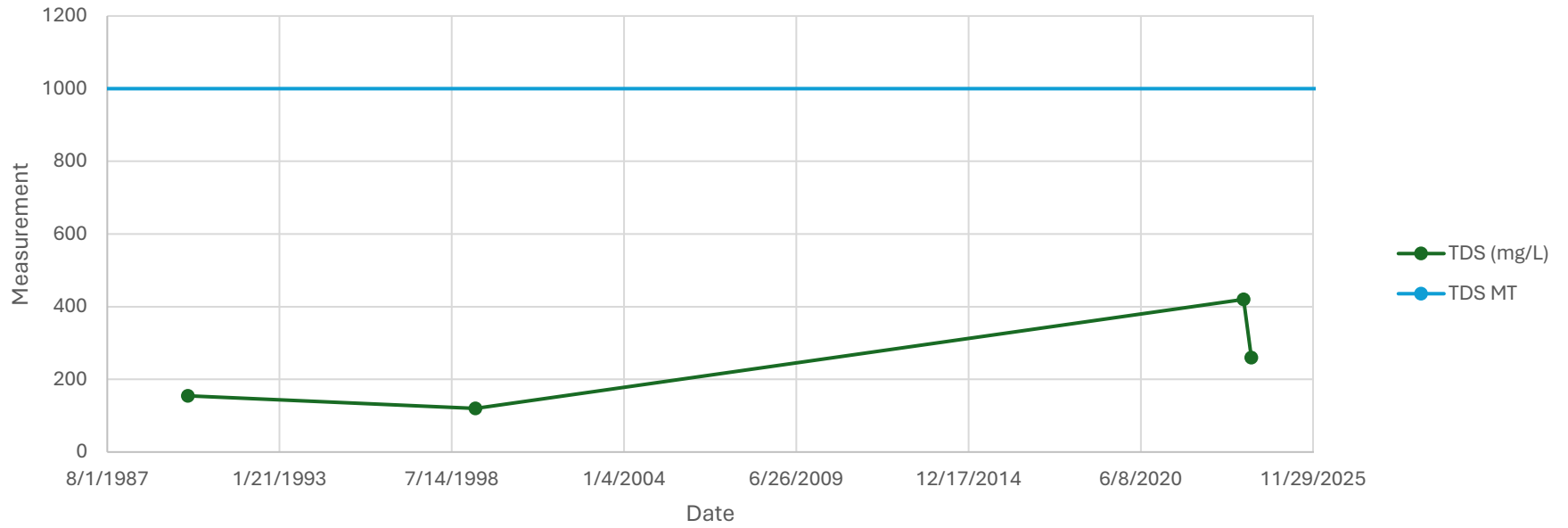


Source: Esri, Maxar, GeoEye, Earthstar Geographics, CNES/Airbus DS, USDA, USGS, AeroGRID, IGN, and the GIS User Community

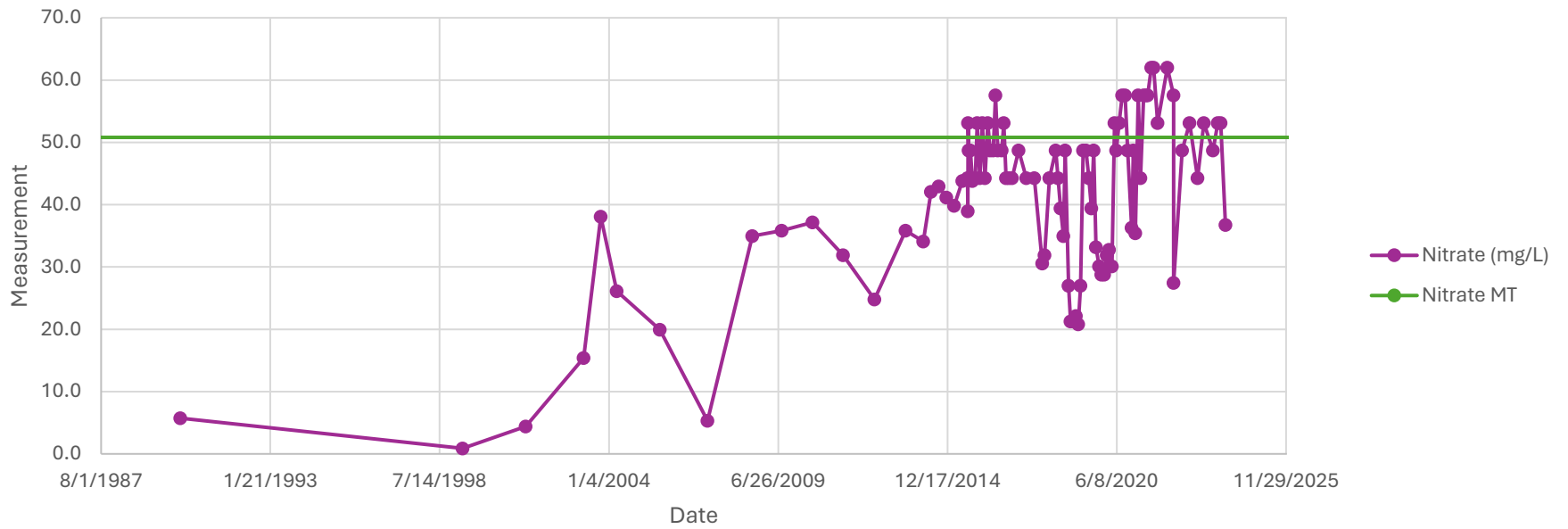
RBG School



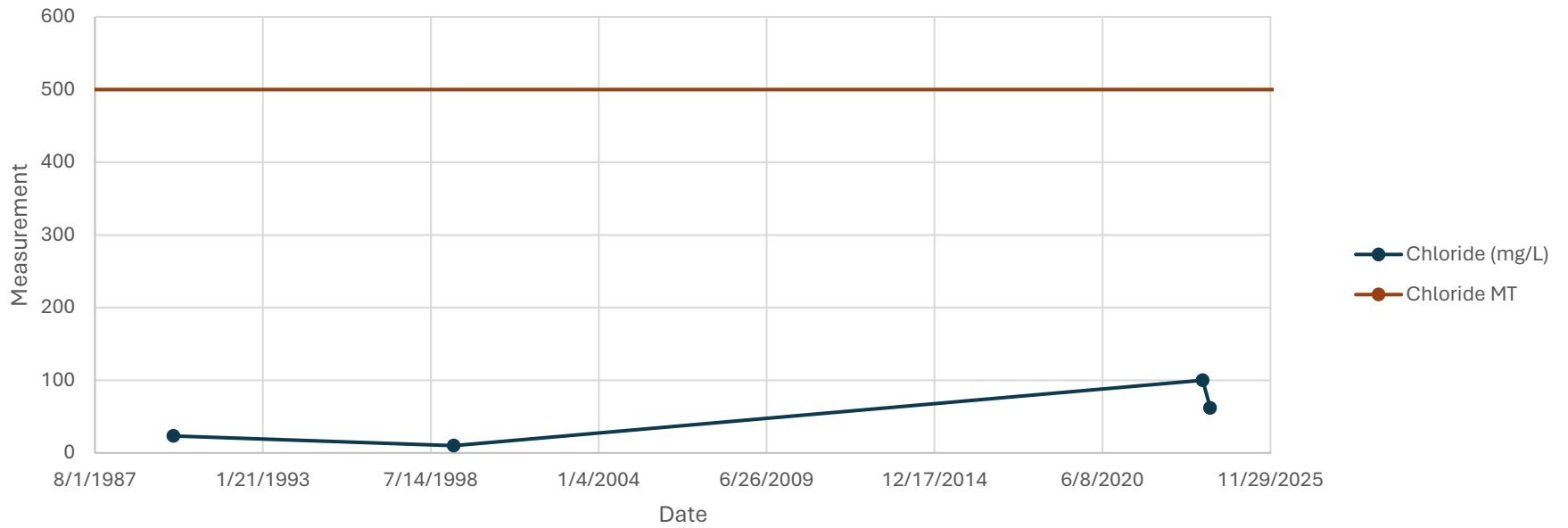
RBG School



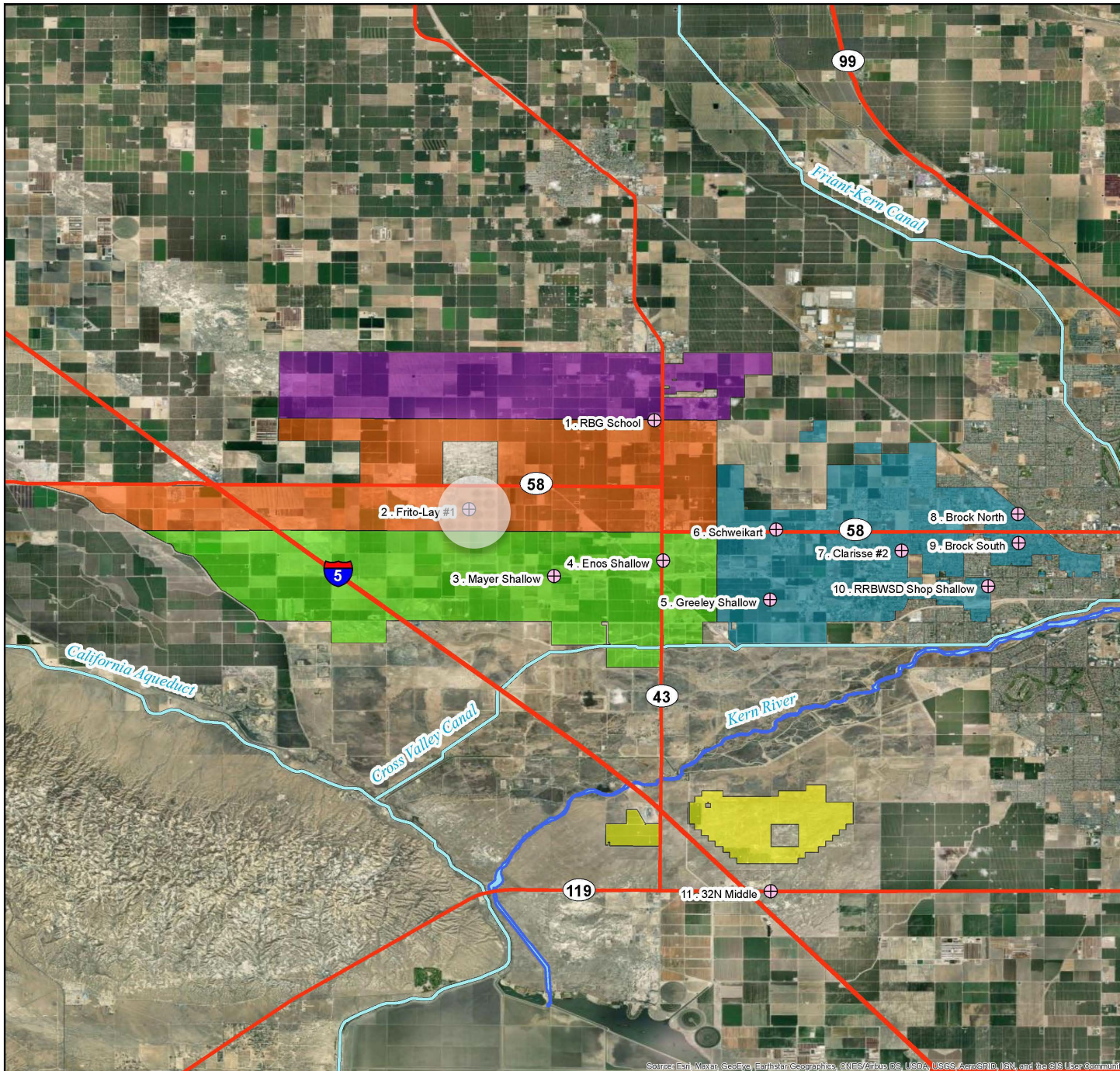
RBG School



RBG School



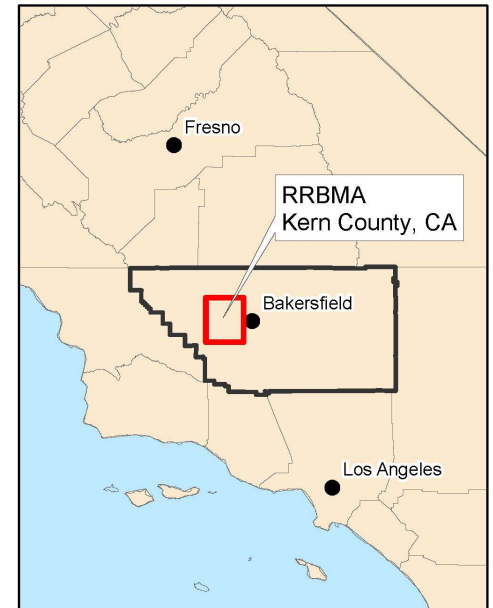
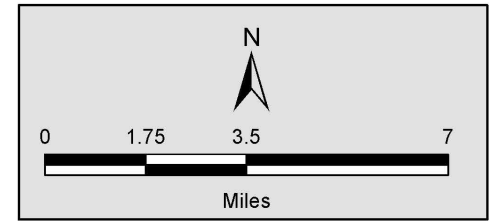
RRBMA Monitoring Areas - Water Quality Wells



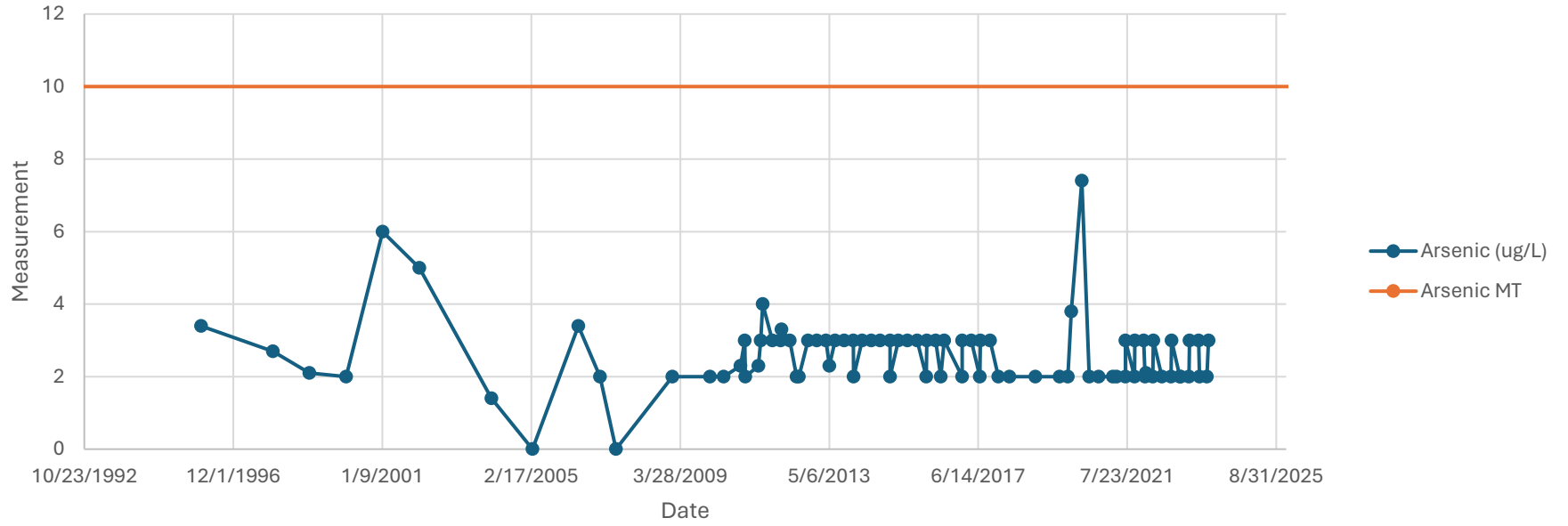
Legend

- ⊕ RRBMA RMW (Water Quality)
- ▬ Kern River
- ▭ North Monitoring Area
- ▭ Central Monitoring Area
- ▭ South Monitoring Area
- ▭ East Monitoring Area
- ▭ South of the River Monitoring Area
- ▬ Major Highways
- ▬ Major Conveyance Facilities

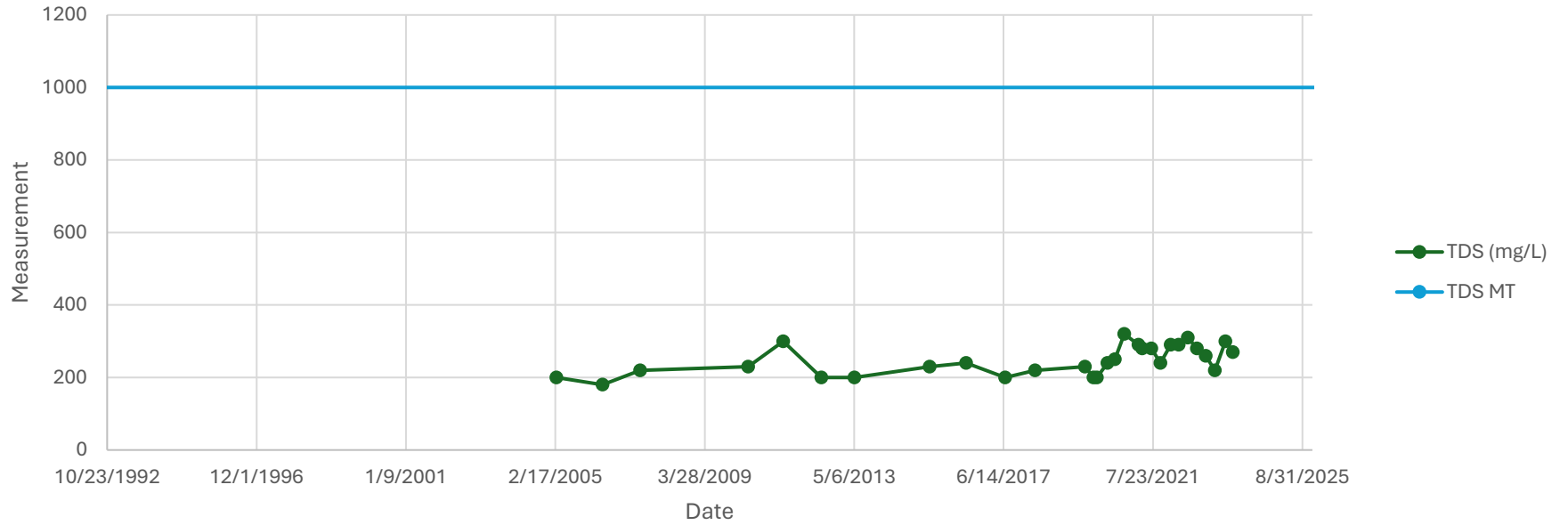
RMW = Representative Monitoring Well



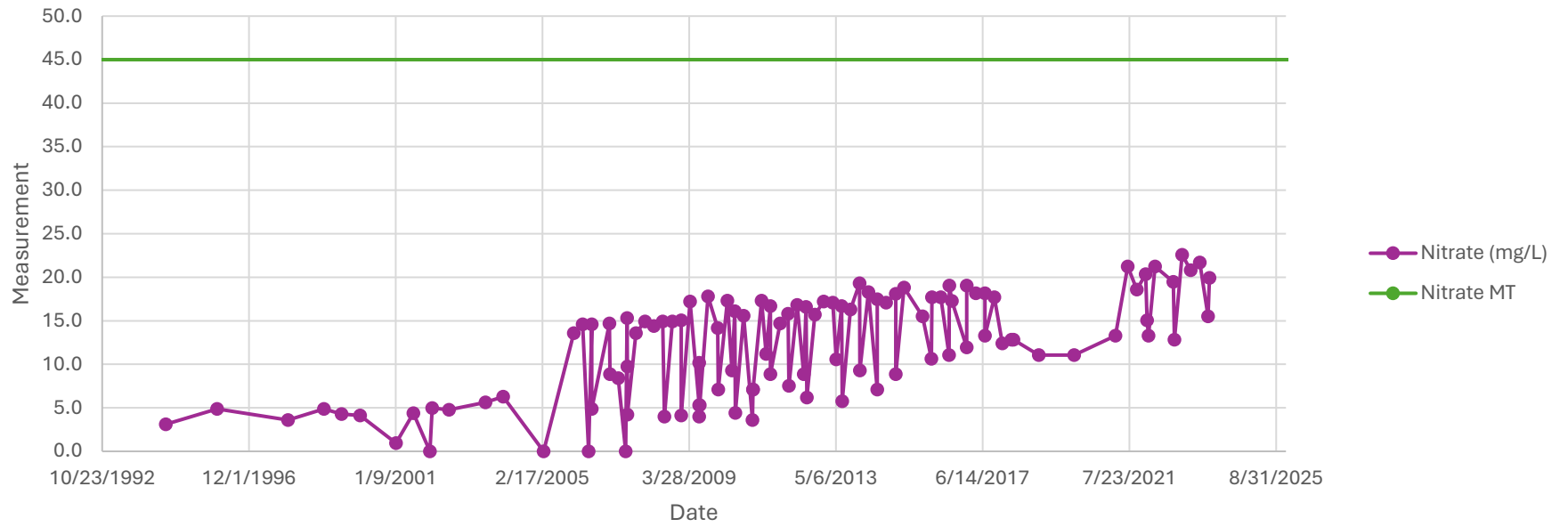
Frito Lay



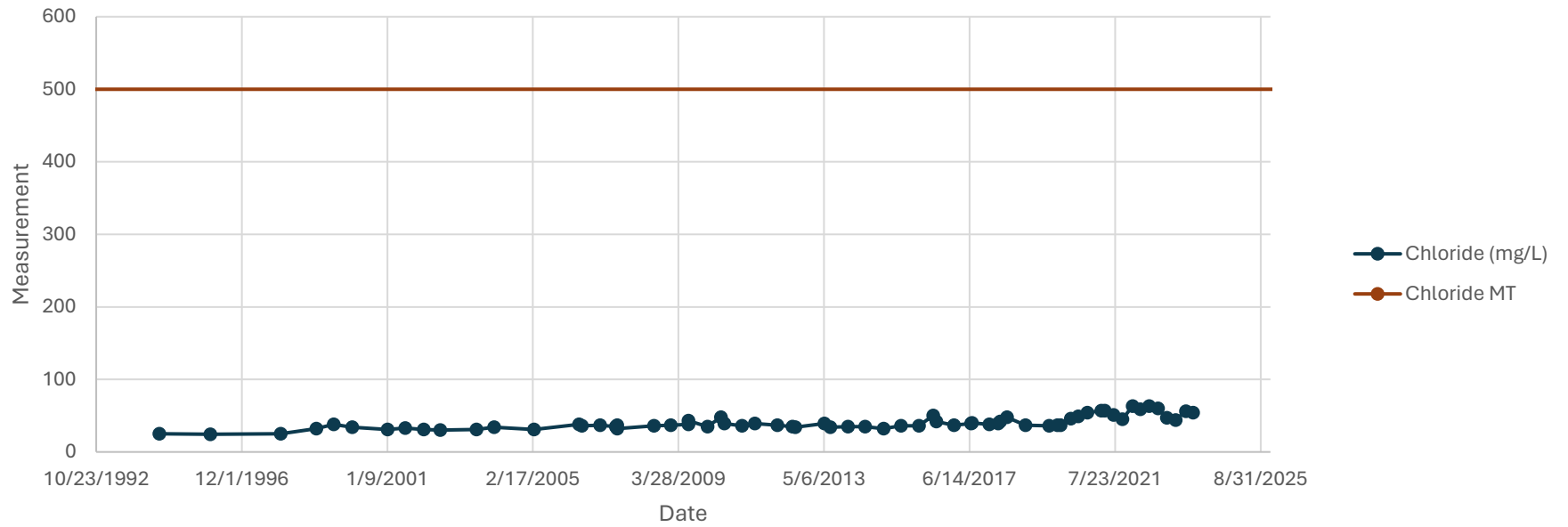
Frito Lay



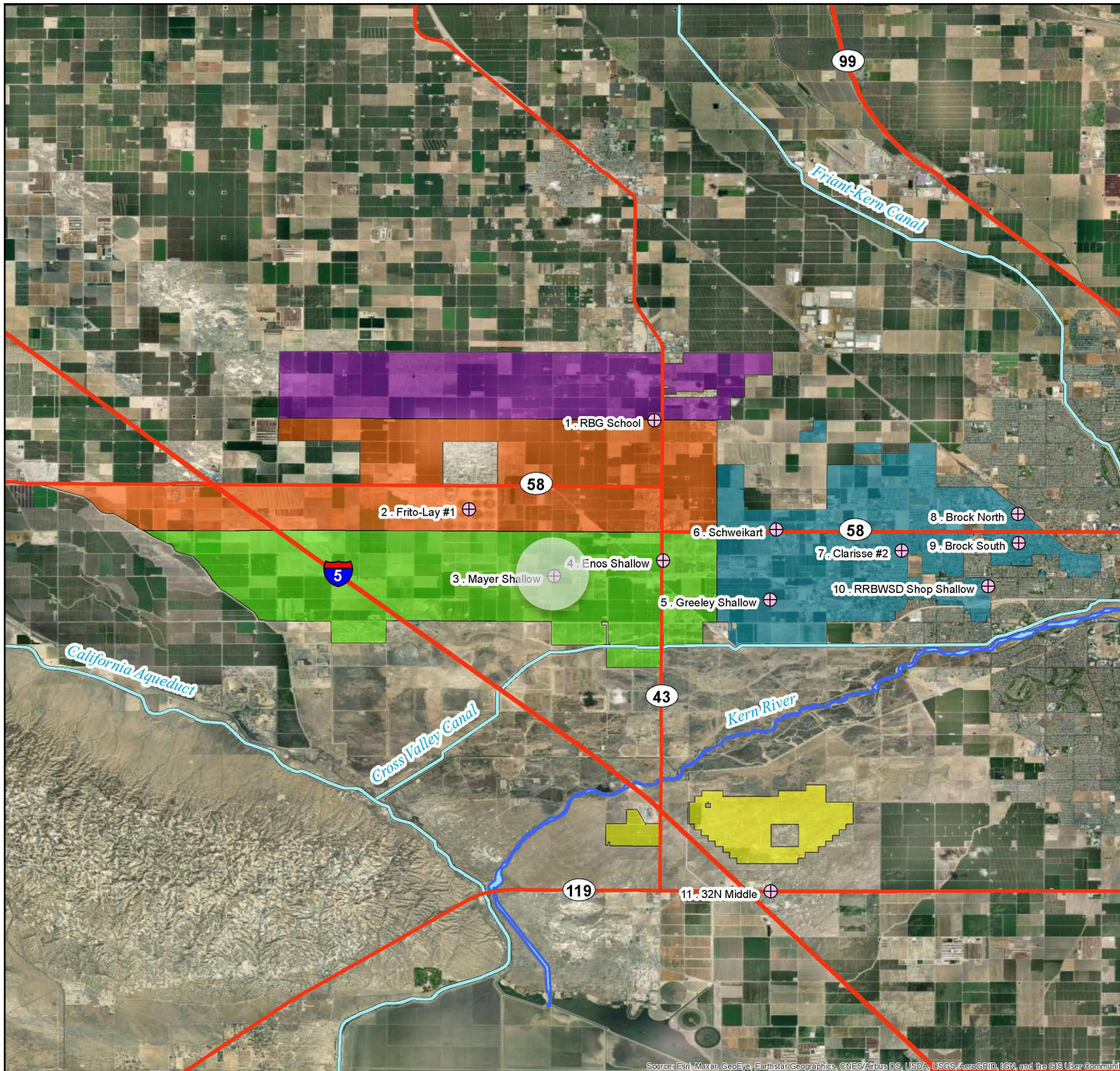
Frito Lay



Frito Lay



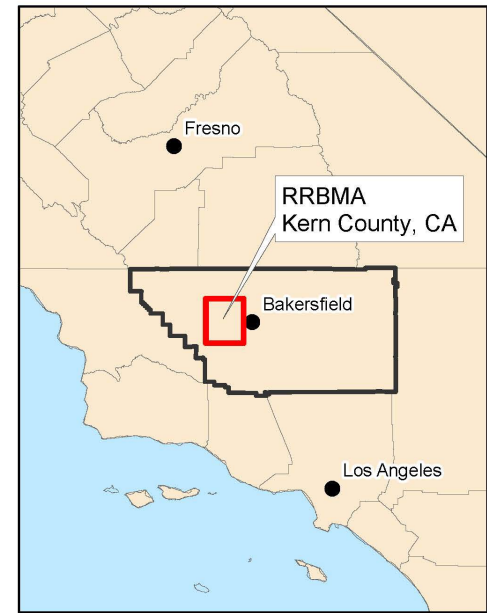
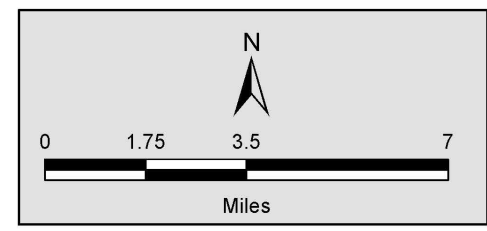
RRBMA Monitoring Areas - Water Quality Wells



Legend

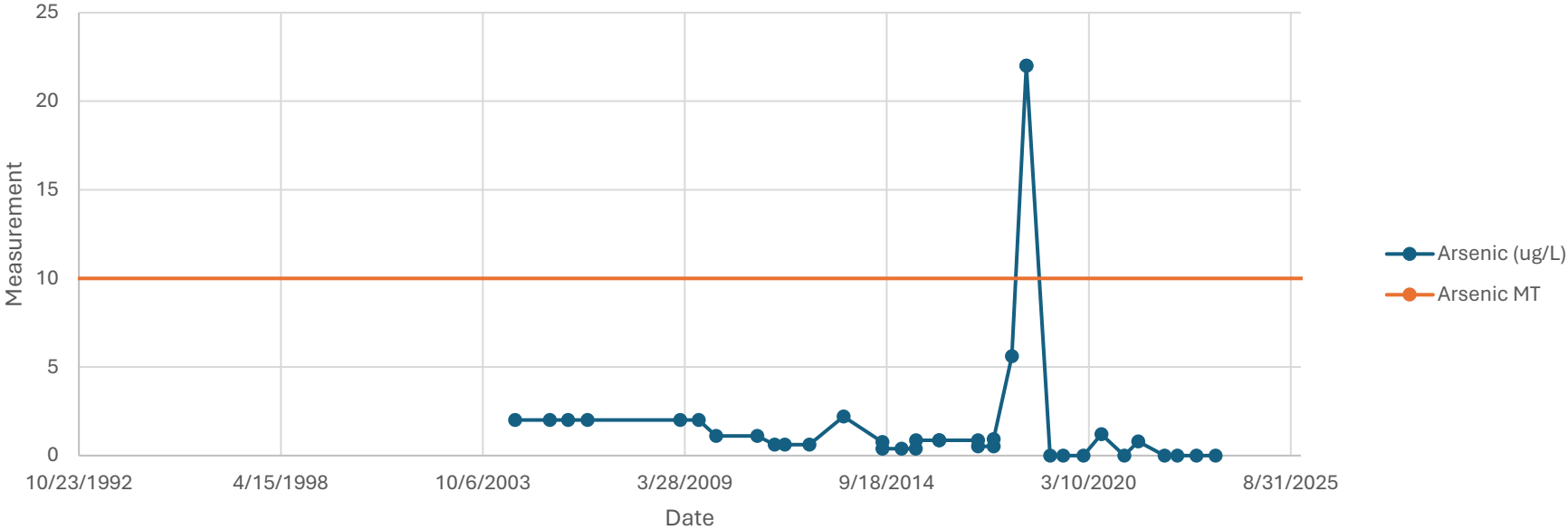
- ⊕ RRBMA RMW (Water Quality)
- ▭ Kern River
- ▭ North Monitoring Area
- ▭ Central Monitoring Area
- ▭ South Monitoring Area
- ▭ East Monitoring Area
- ▭ South of the River Monitoring Area
- ▬ Major Highways
- ▬ Major Conveyance Facilities

RMW = Representative Monitoring Well

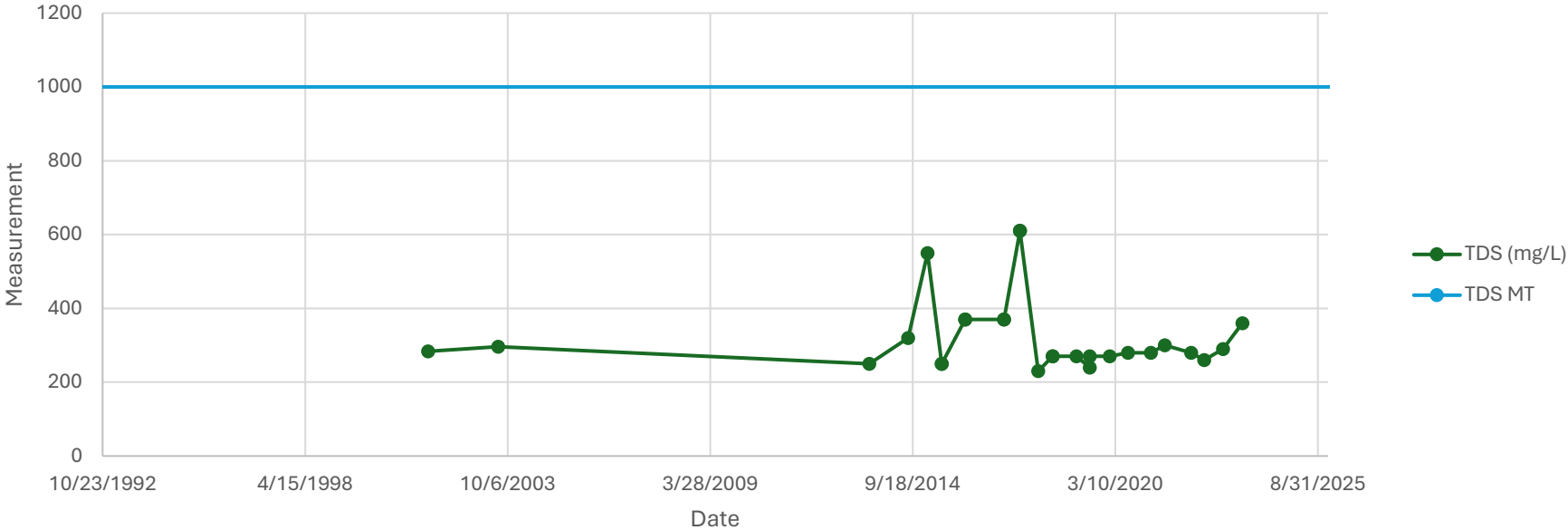


Source: Esri, Water, GeoEye, Earthstar Geographics, CNES/Airbus/RS, USDA, USGS, AeroGRID, IGN, and the GIS User Community

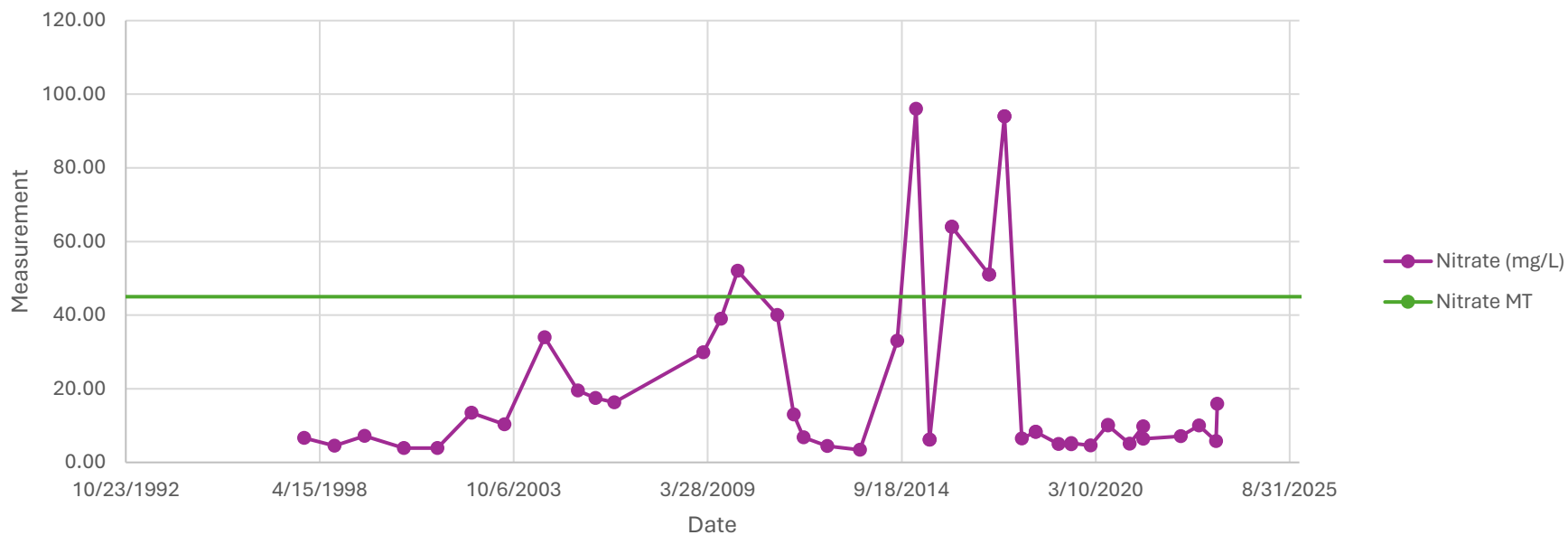
Mayer Shallow



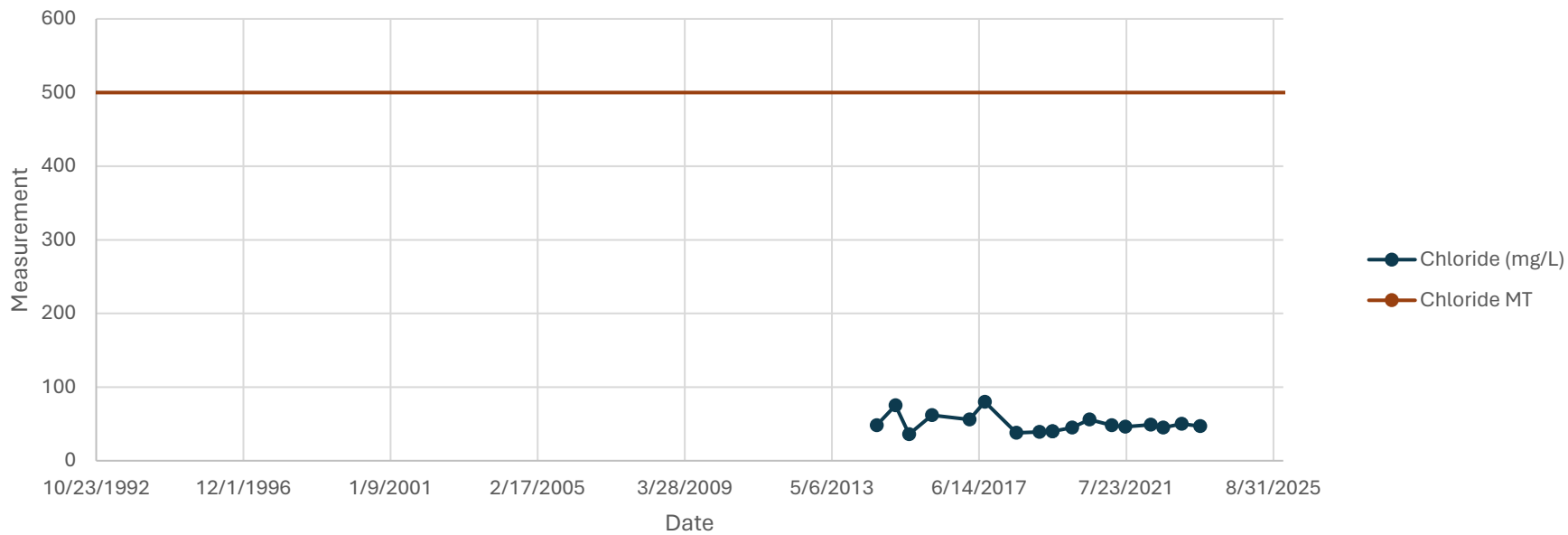
Mayer Shallow



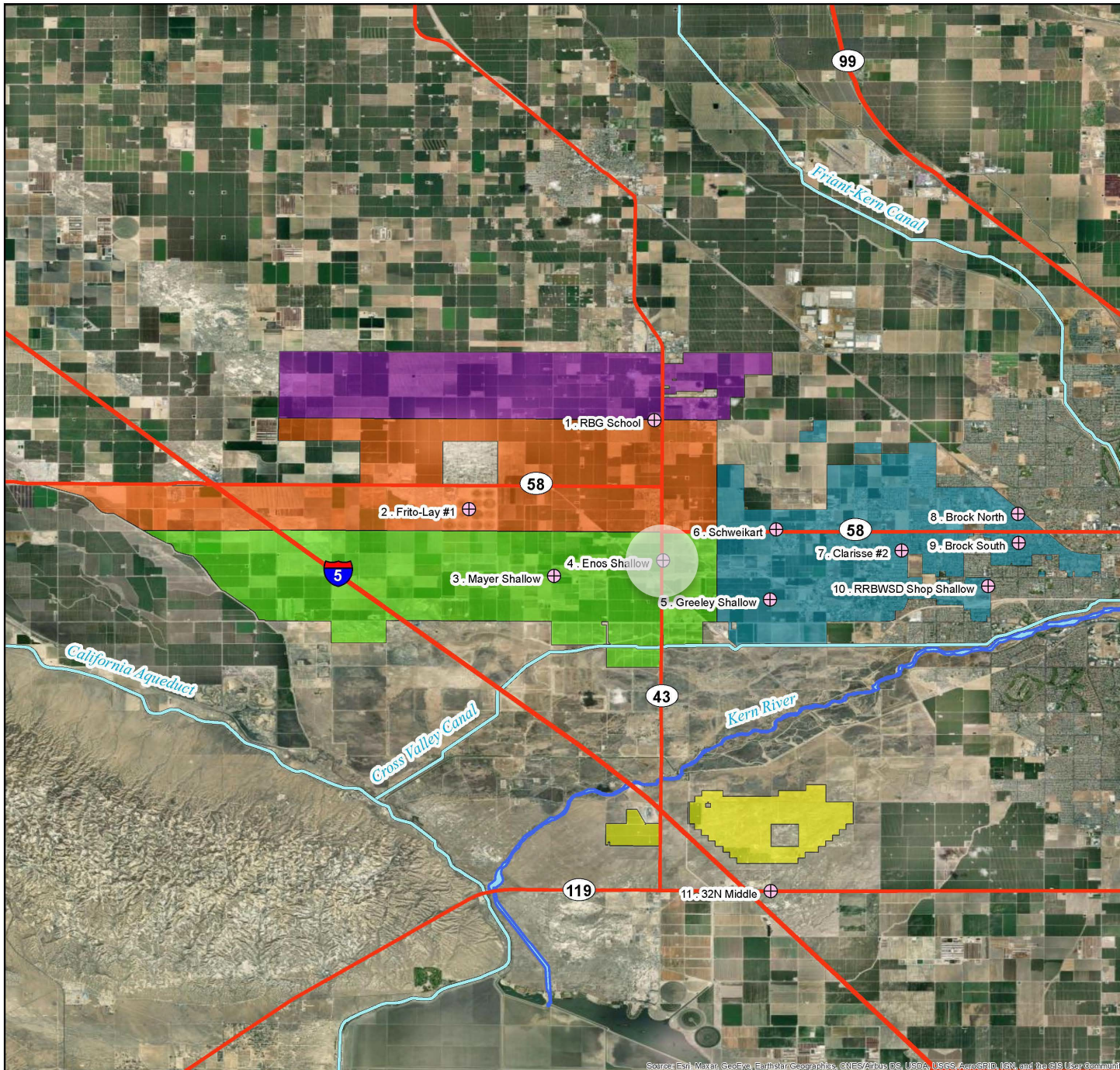
Mayer Shallow



Mayer Shallow

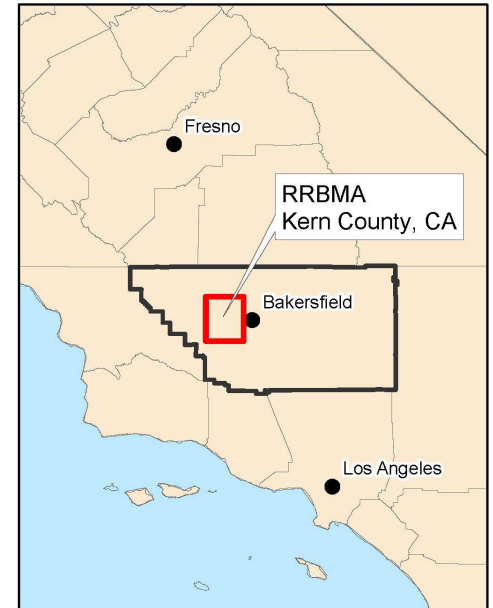
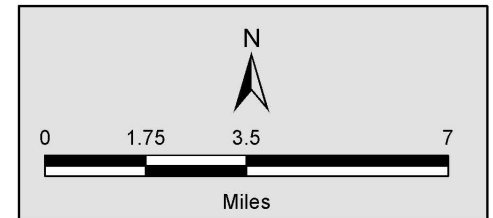


RRBMA Monitoring Areas - Water Quality Wells

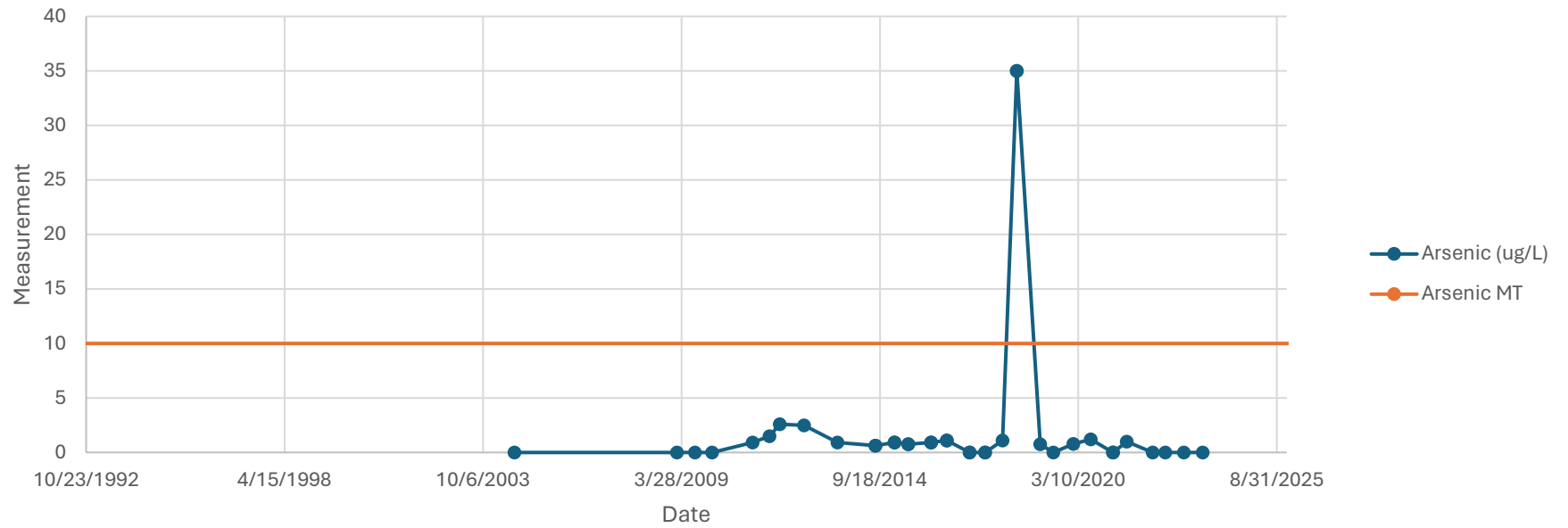


Legend

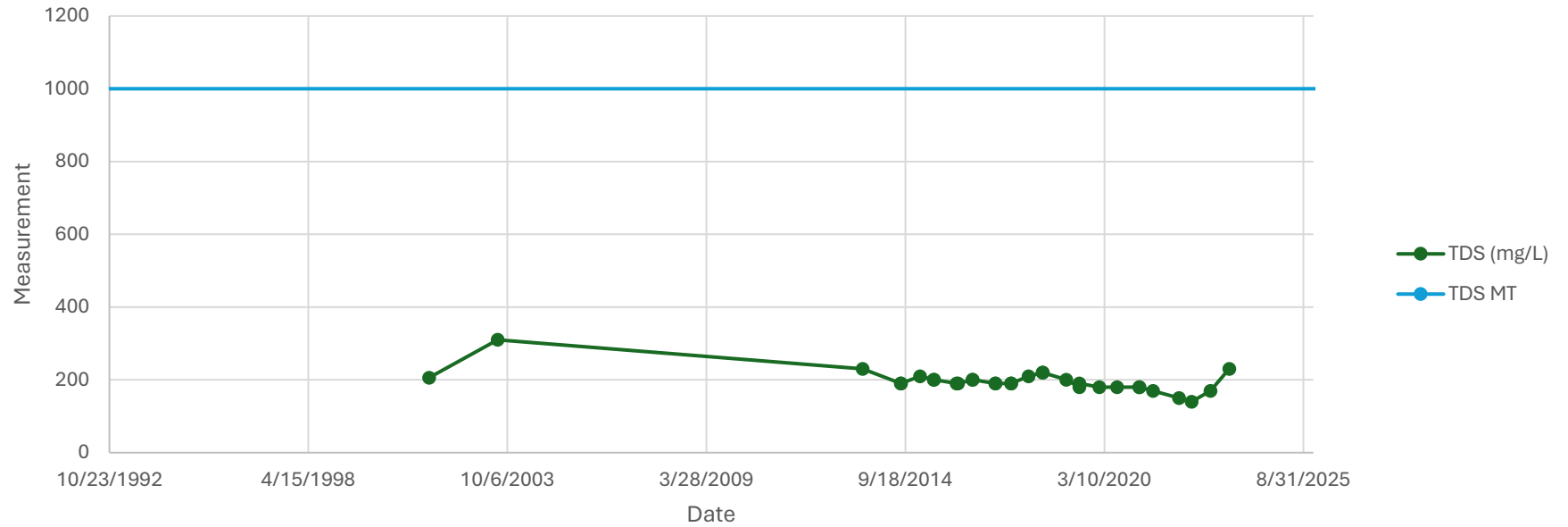
- ⊕ RRBMA RMW (Water Quality)
 - Kern River
 - North Monitoring Area
 - Central Monitoring Area
 - South Monitoring Area
 - East Monitoring Area
 - South of the River Monitoring Area
 - Major Highways
 - Major Conveyance Facilities
- RMW = Representative Monitoring Well



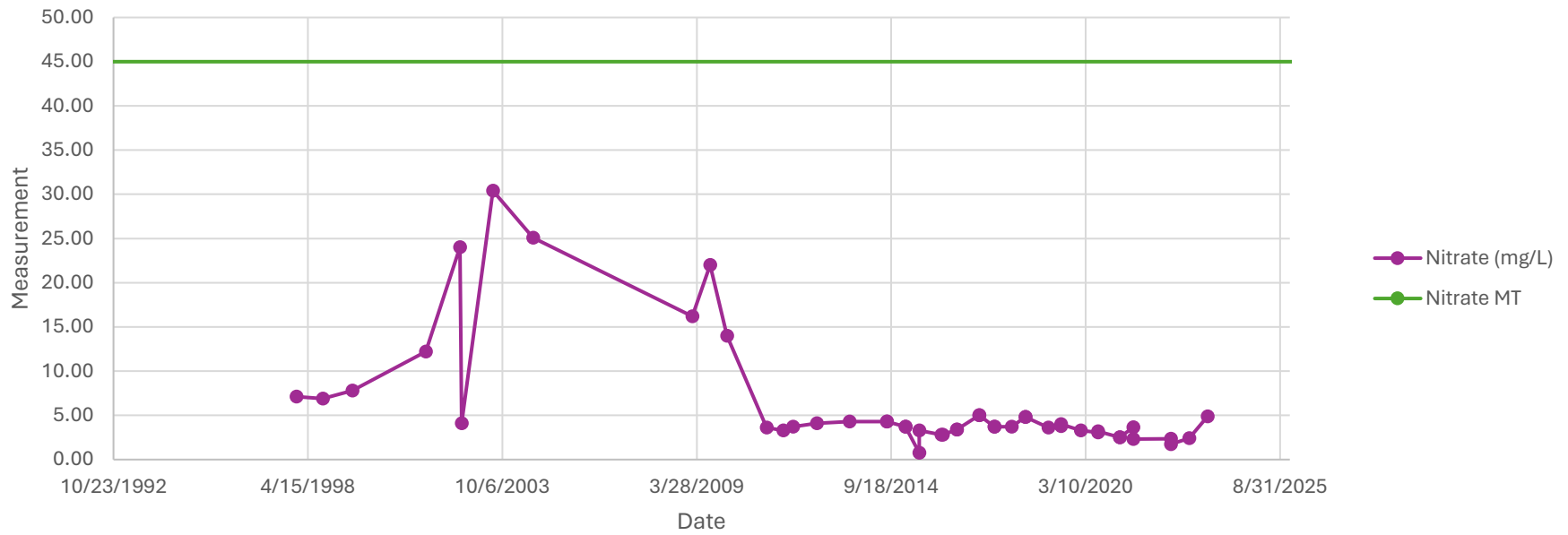
Enos Shallow



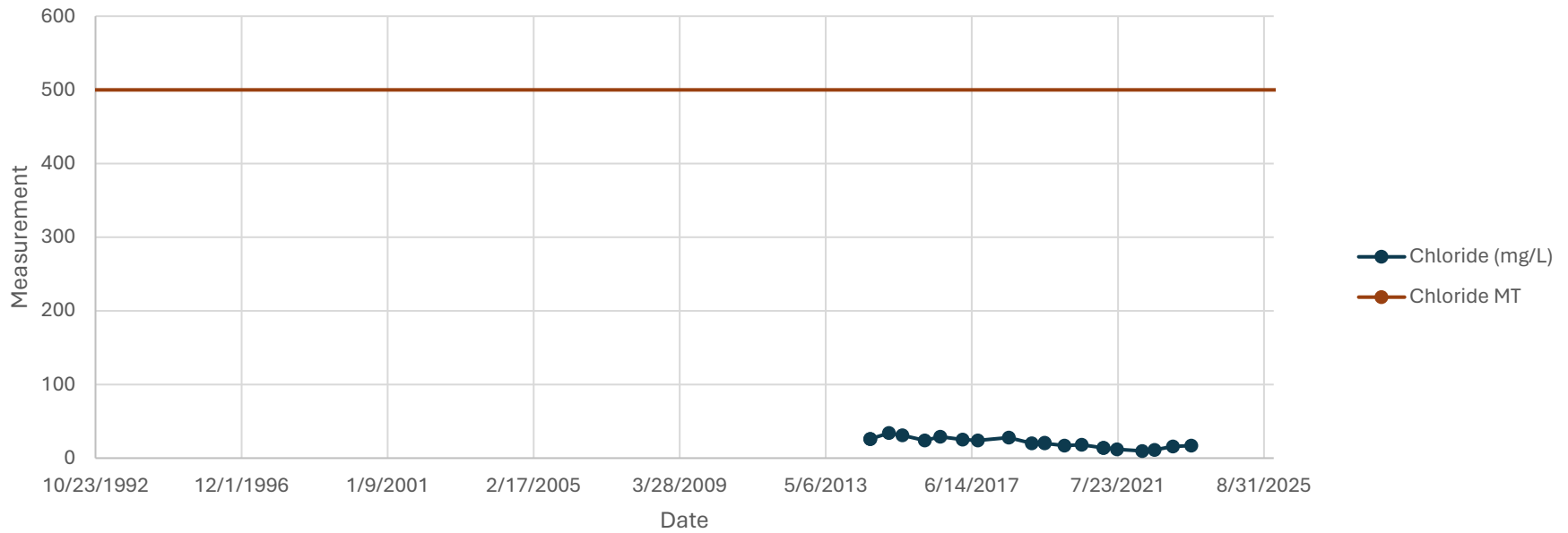
Enos Shallow



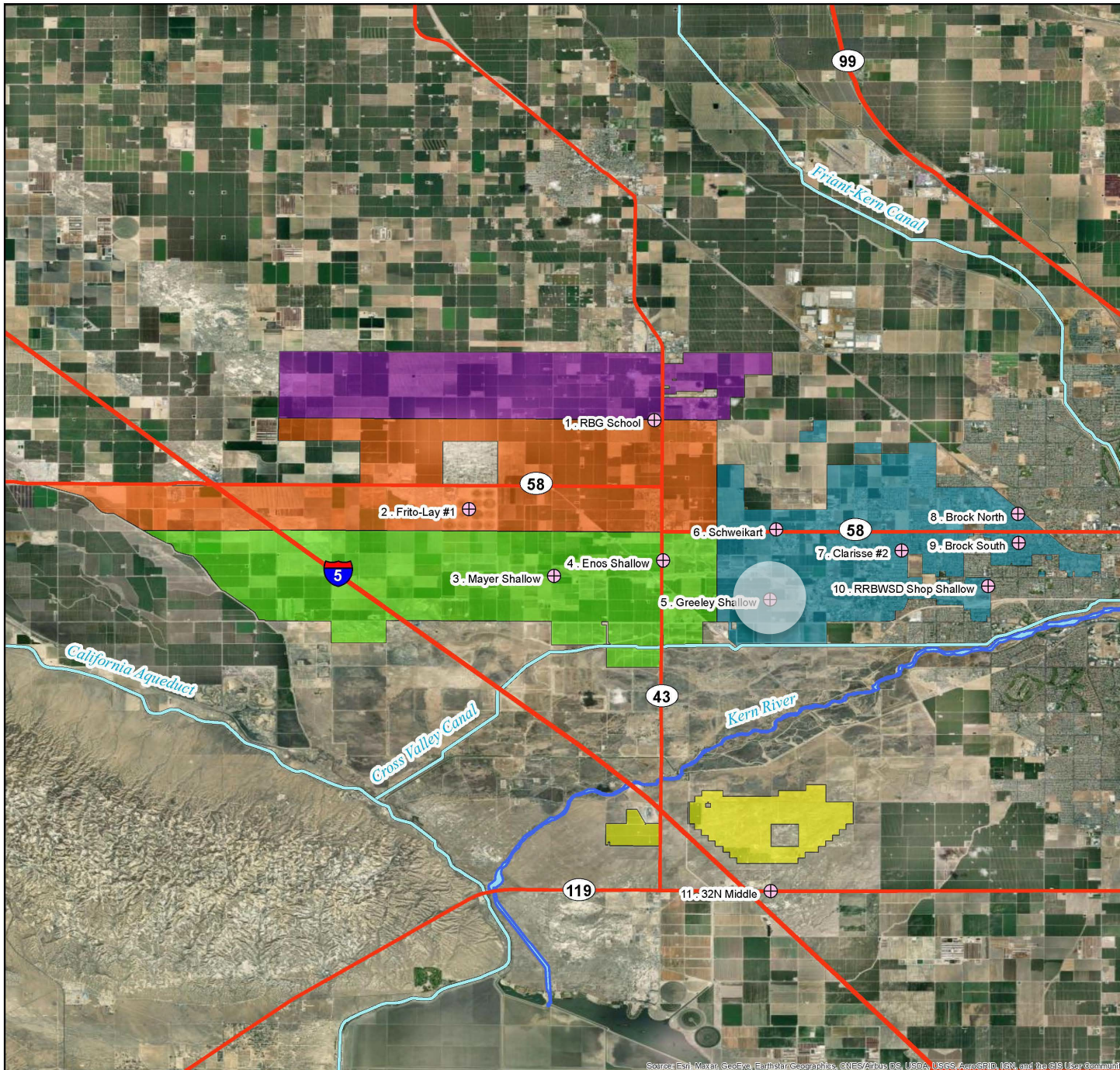
Enos Shallow



Enos Shallow

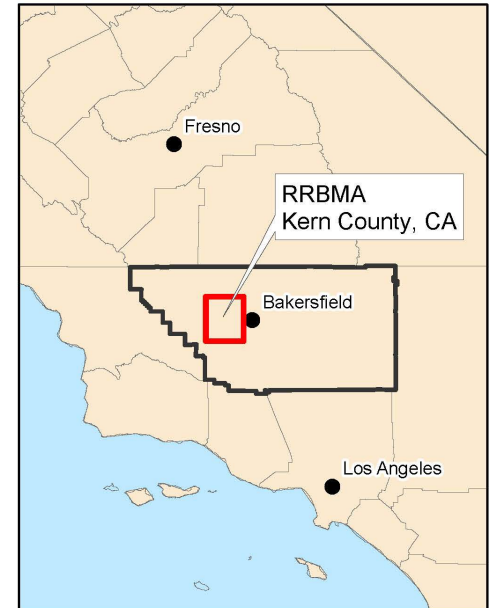
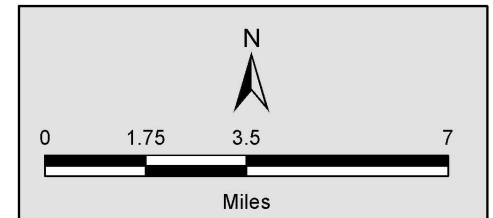


RRBMA Monitoring Areas - Water Quality Wells

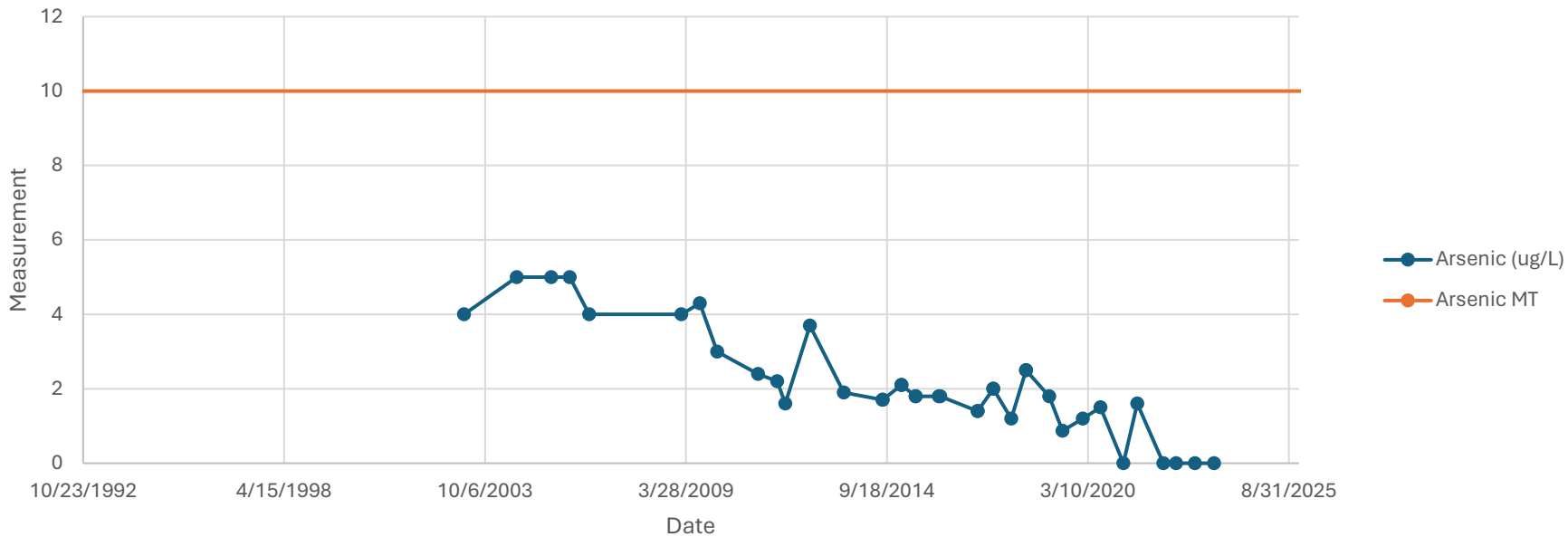


Legend

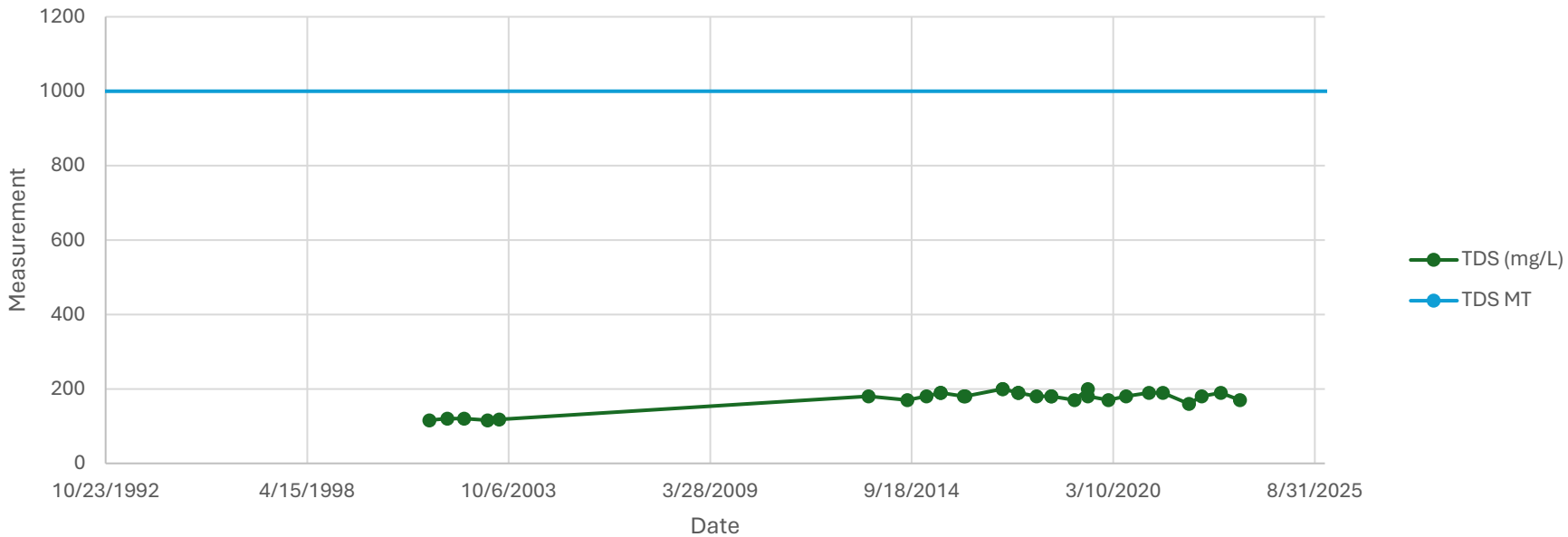
- ⊕ RRBMA RMW (Water Quality)
 - Kern River
 - North Monitoring Area
 - Central Monitoring Area
 - South Monitoring Area
 - East Monitoring Area
 - South of the River Monitoring Area
 - Major Highways
 - Major Conveyance Facilities
- RMW = Representative Monitoring Well



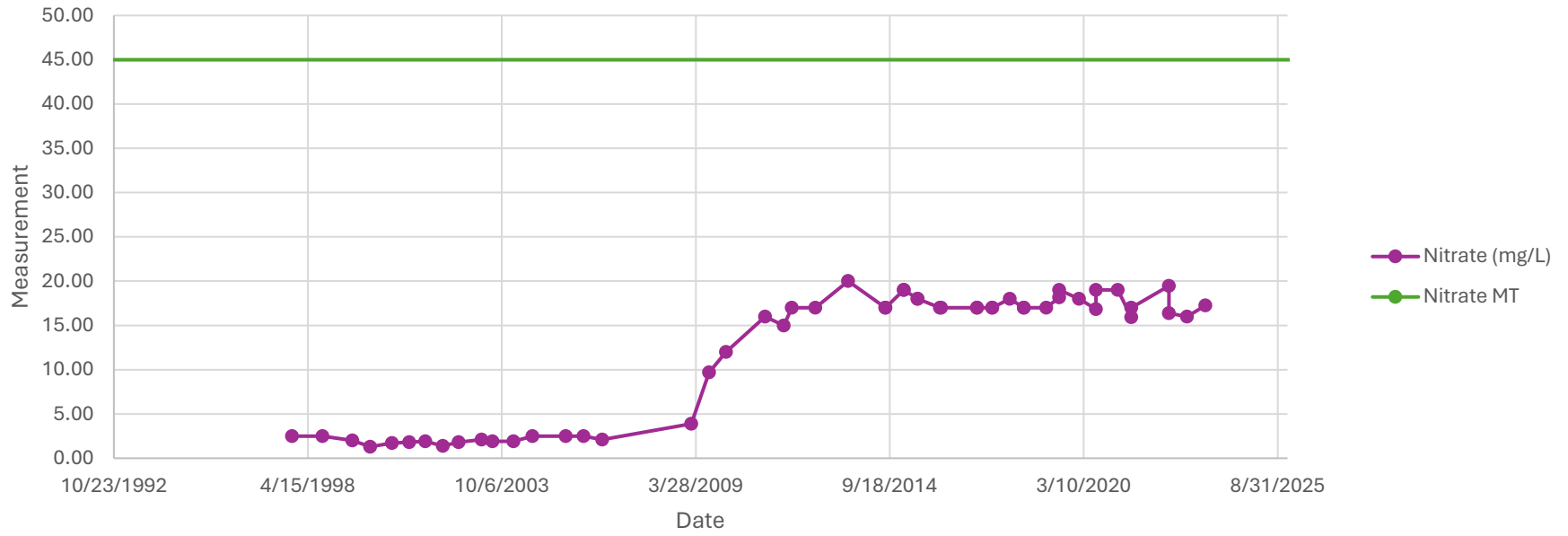
Greeley Shallow



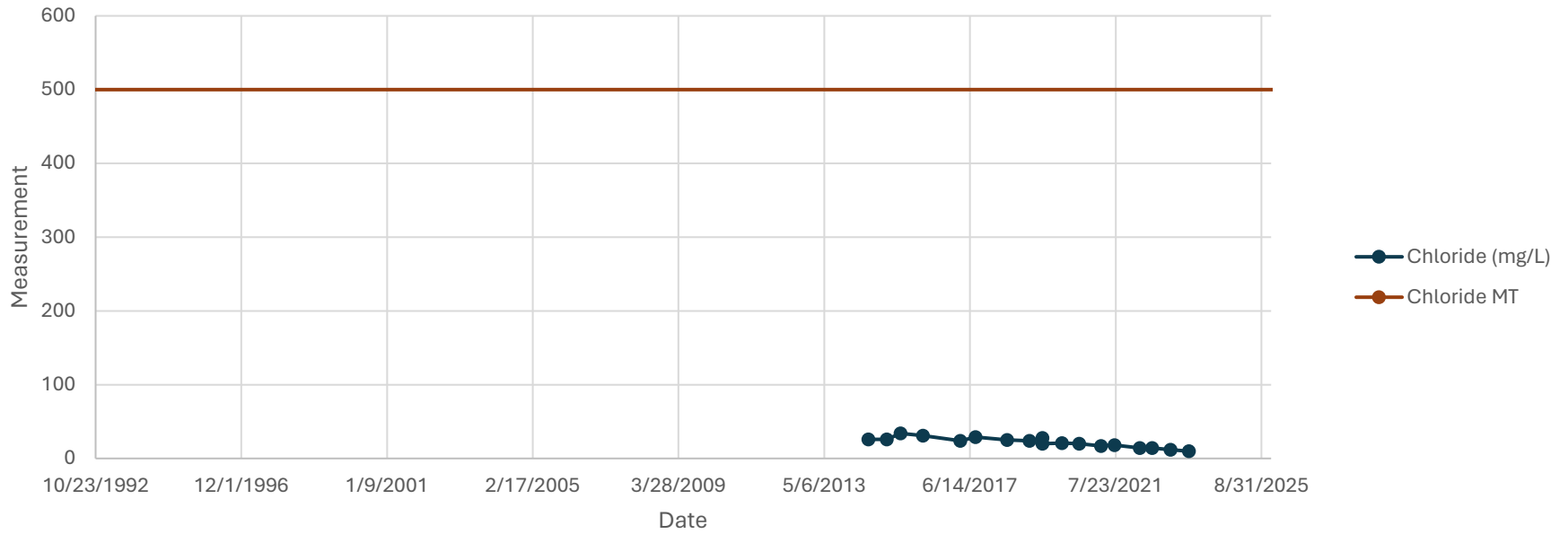
Greeley Shallow



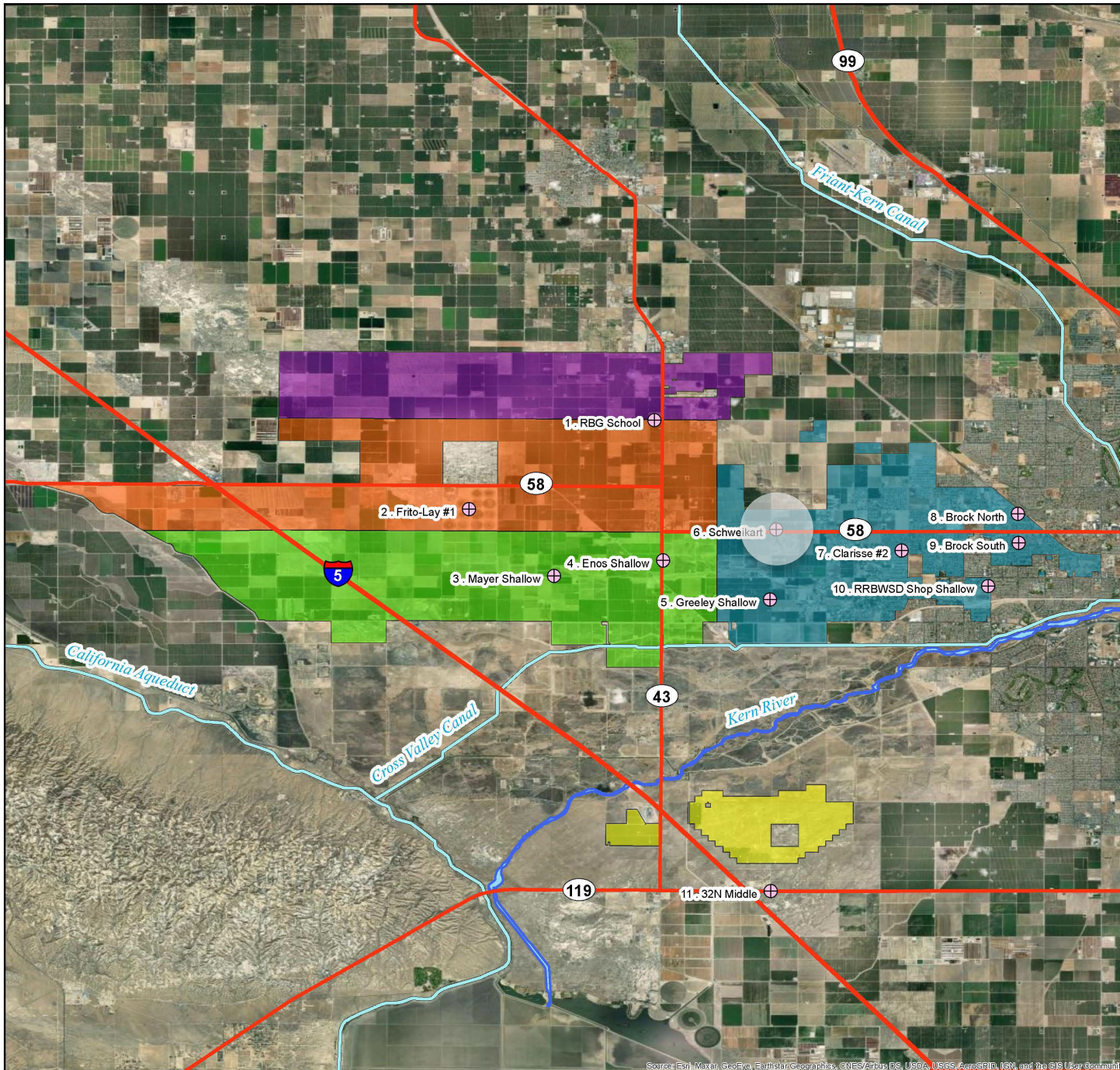
Greeley Shallow



Greeley Shallow

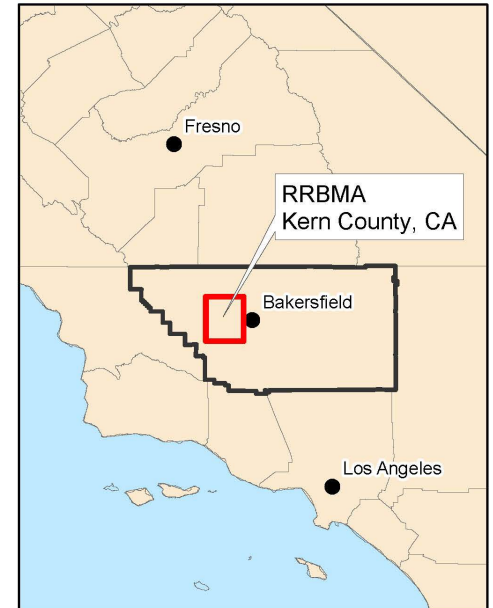
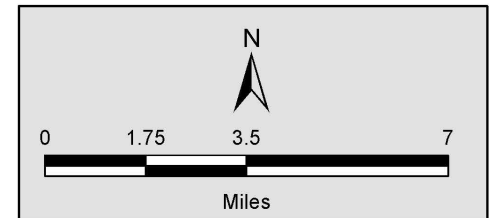


RRBMA Monitoring Areas - Water Quality Wells

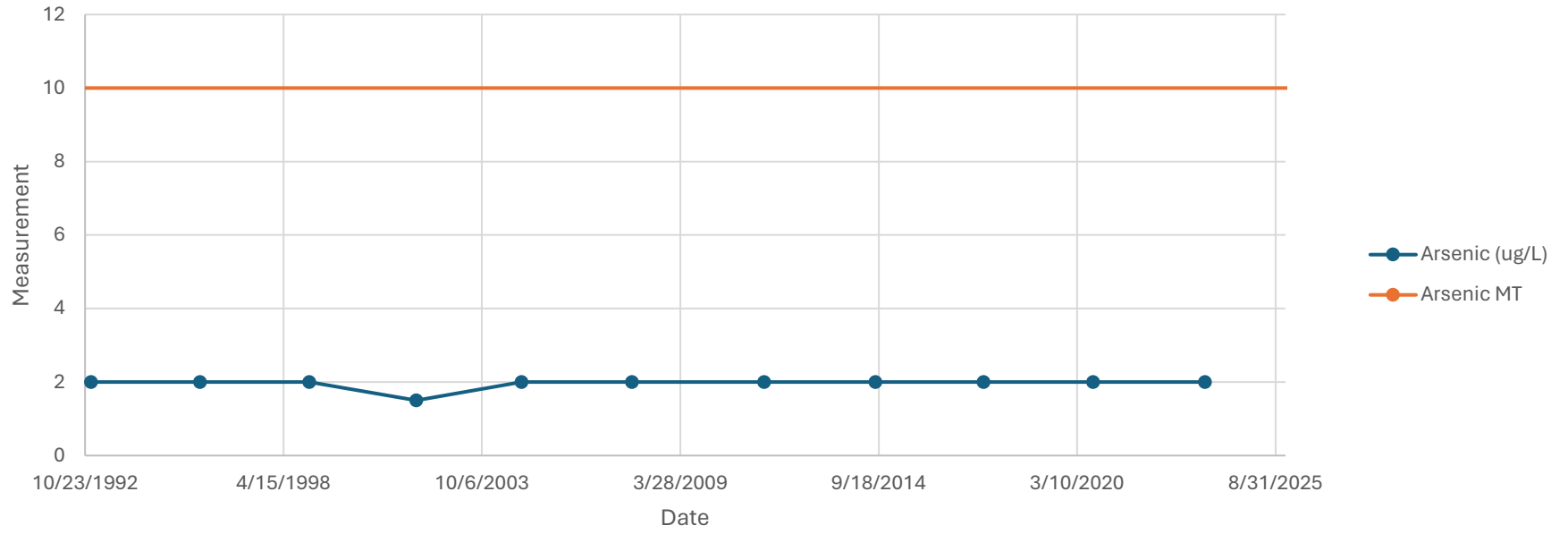


Legend

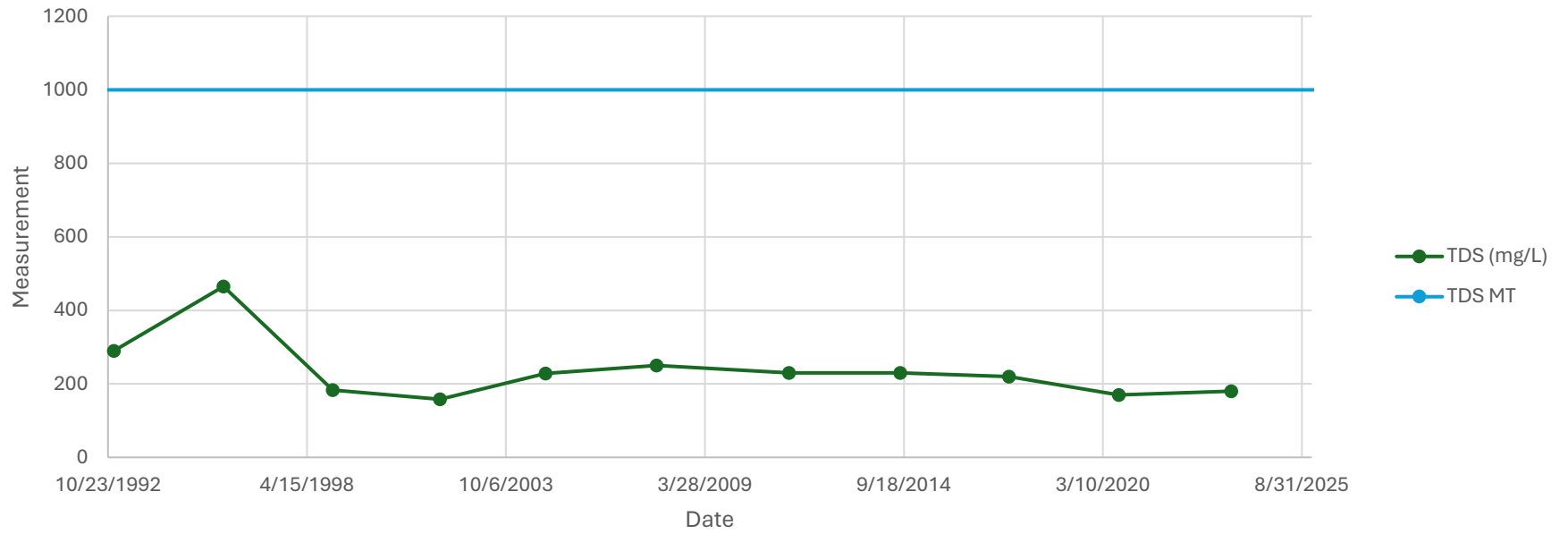
- ⊕ RRBMA RMW (Water Quality)
 - Kern River
 - North Monitoring Area
 - Central Monitoring Area
 - South Monitoring Area
 - East Monitoring Area
 - South of the River Monitoring Area
 - Major Highways
 - Major Conveyance Facilities
- RMW = Representative Monitoring Well



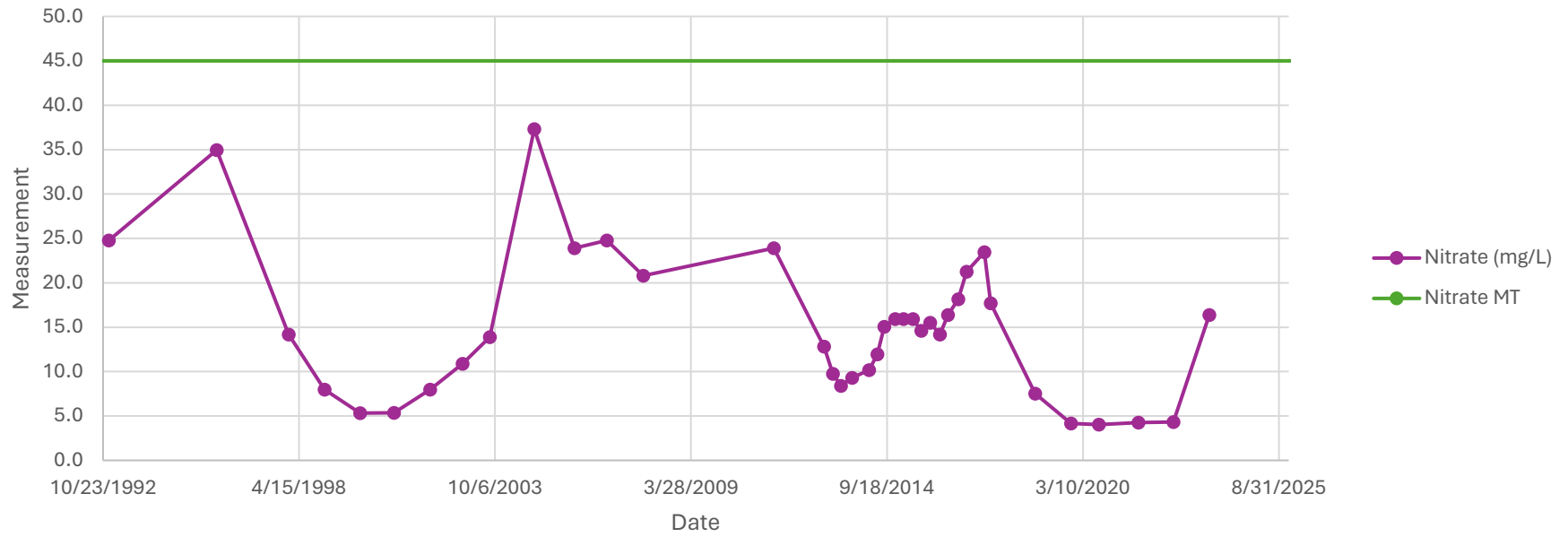
Schweikart



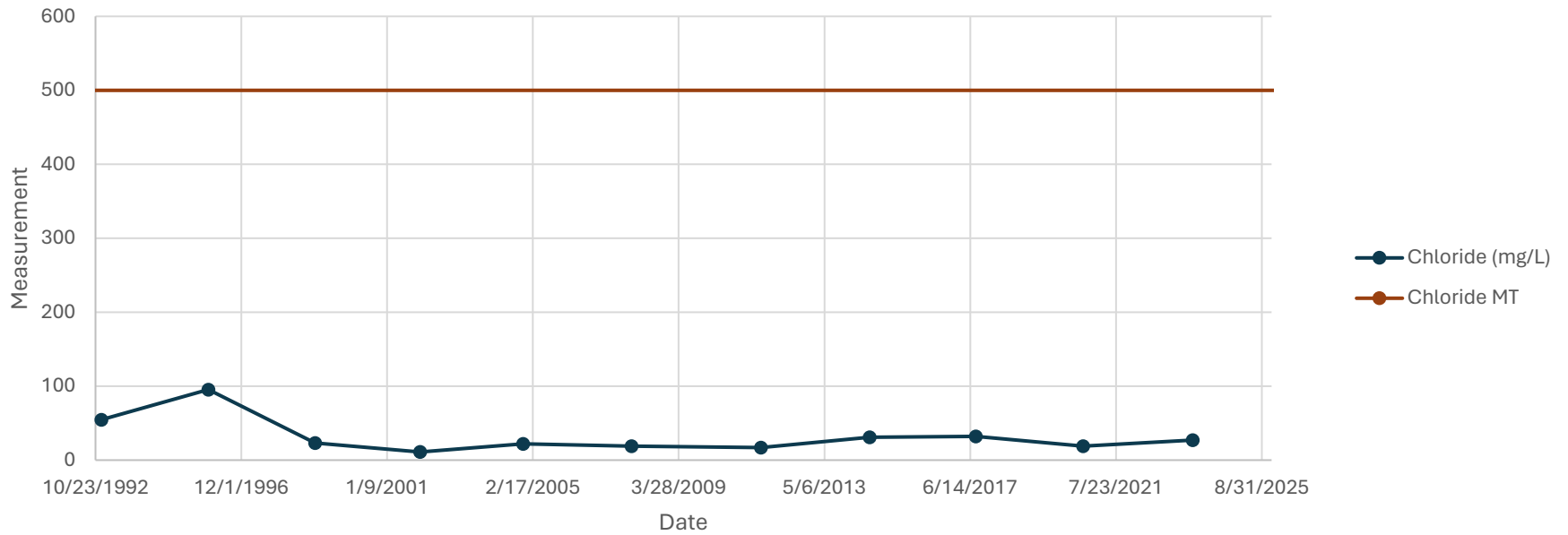
Schweikart



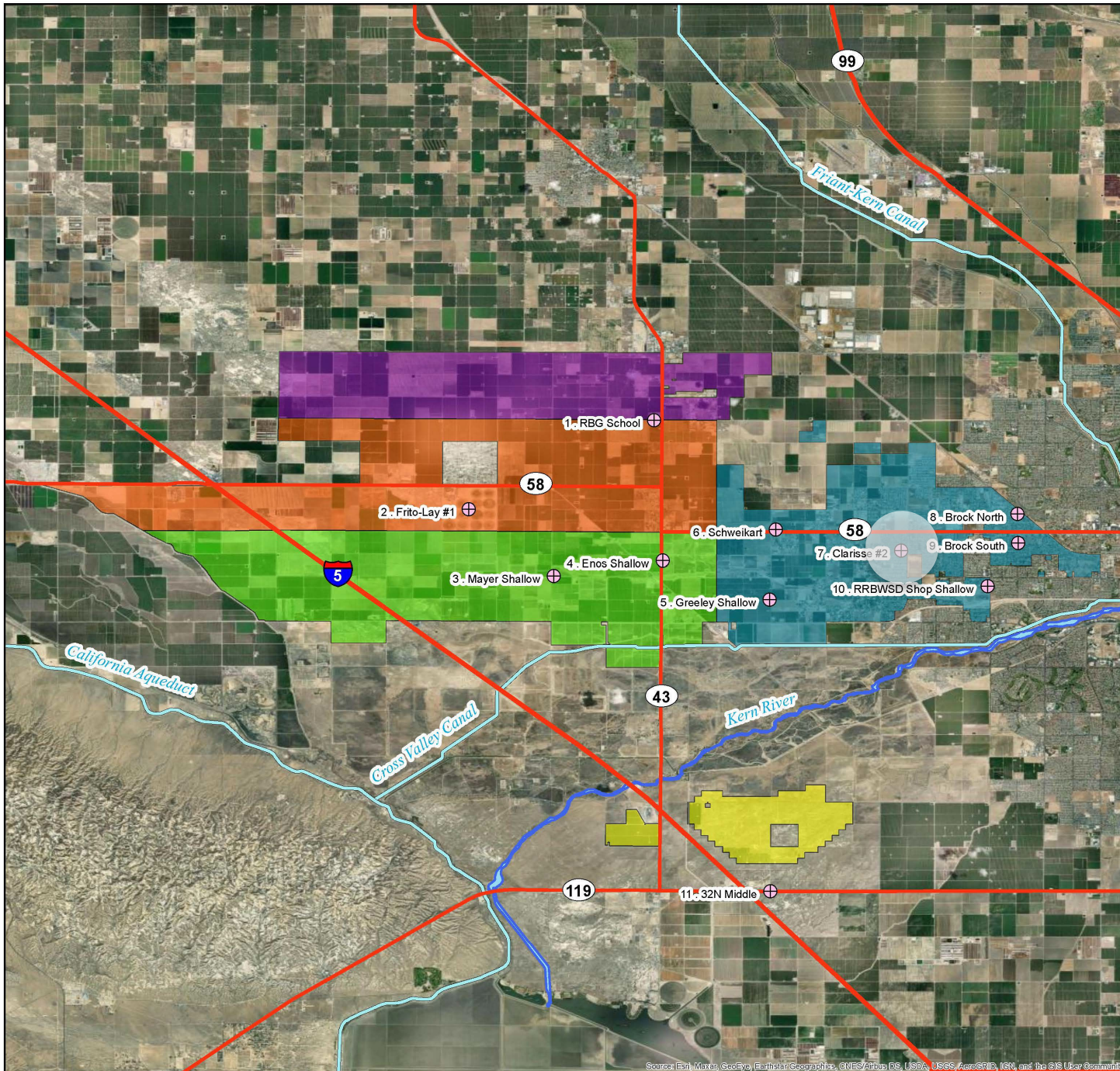
Schweikart



Schweikart



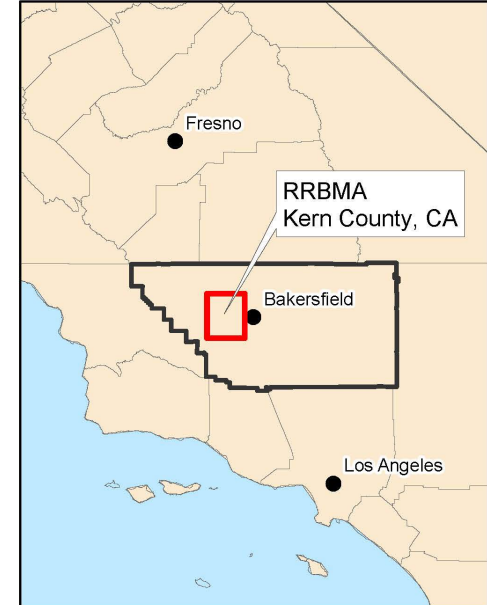
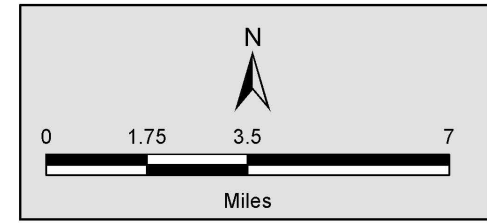
RRBMA Monitoring Areas - Water Quality Wells



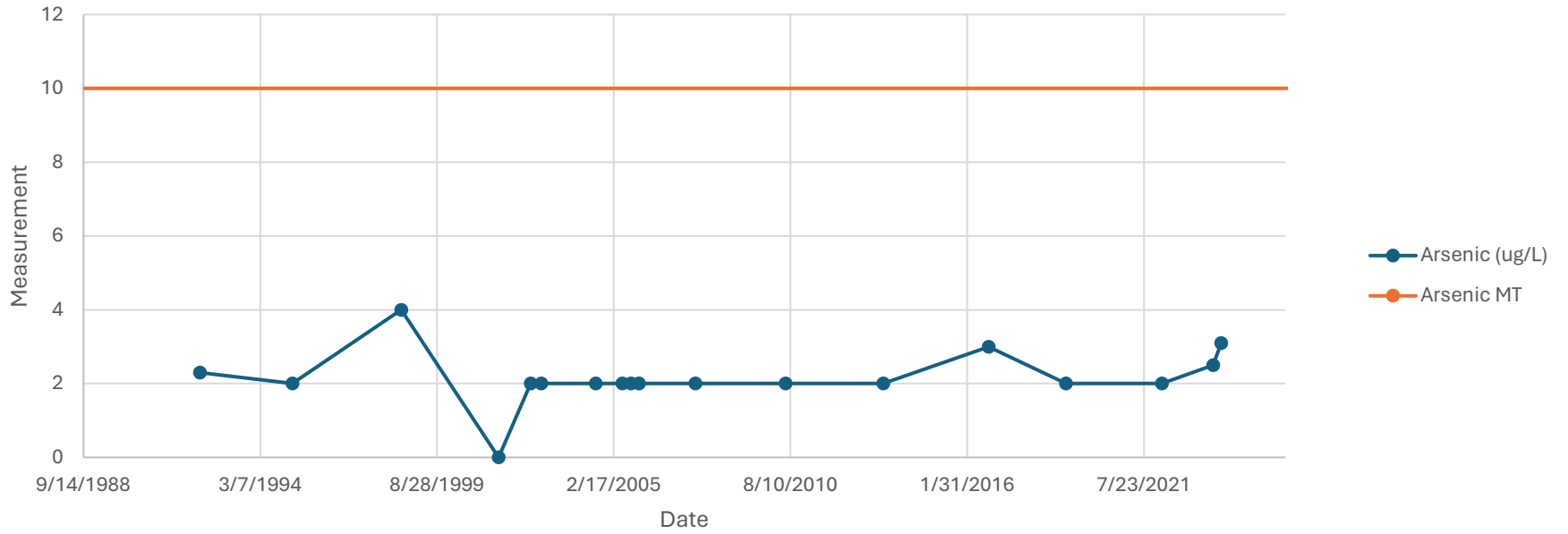
Legend

- ⊕ RRBMA RMW (Water Quality)
- Kern River
- North Monitoring Area
- Central Monitoring Area
- South Monitoring Area
- East Monitoring Area
- South of the River Monitoring Area
- Major Highways
- Major Conveyance Facilities

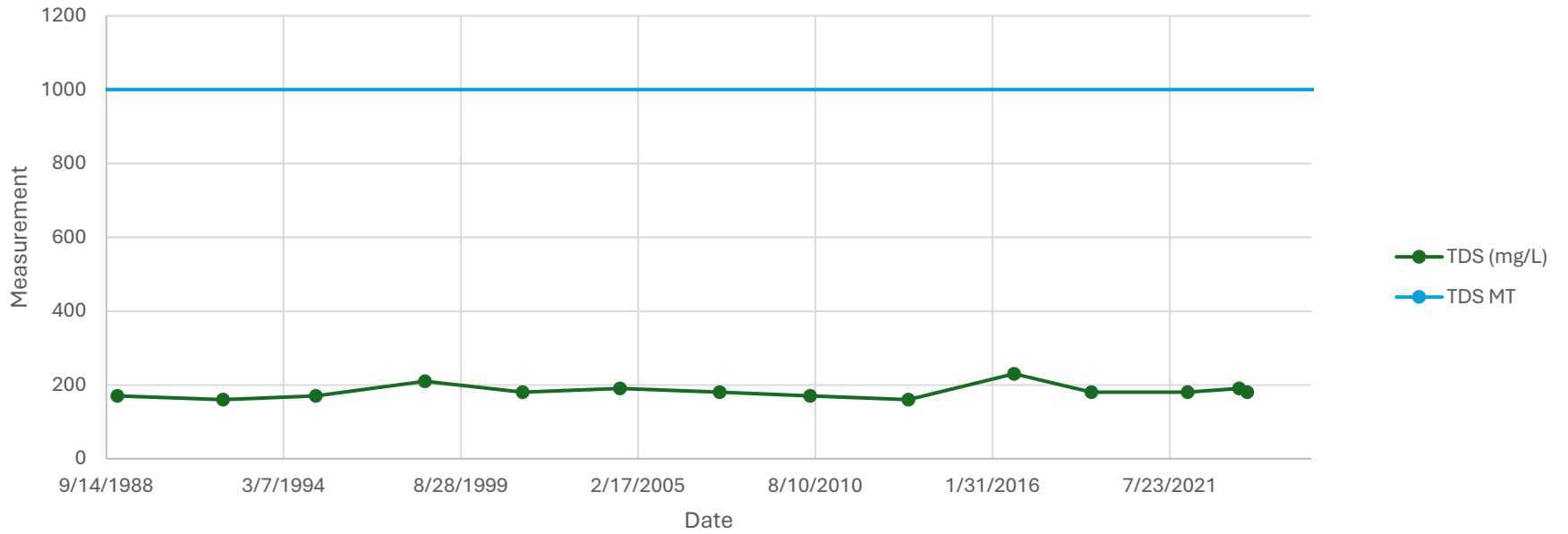
RMW = Representative Monitoring Well



Clarisse #2



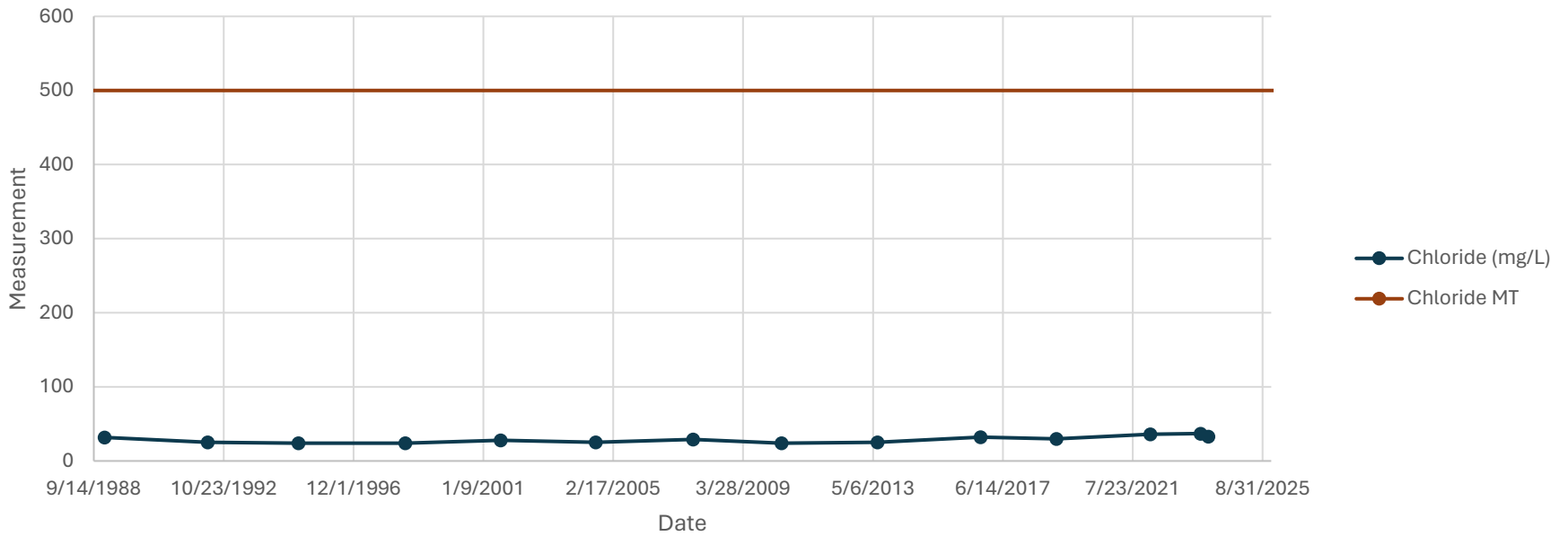
Clarisse #2



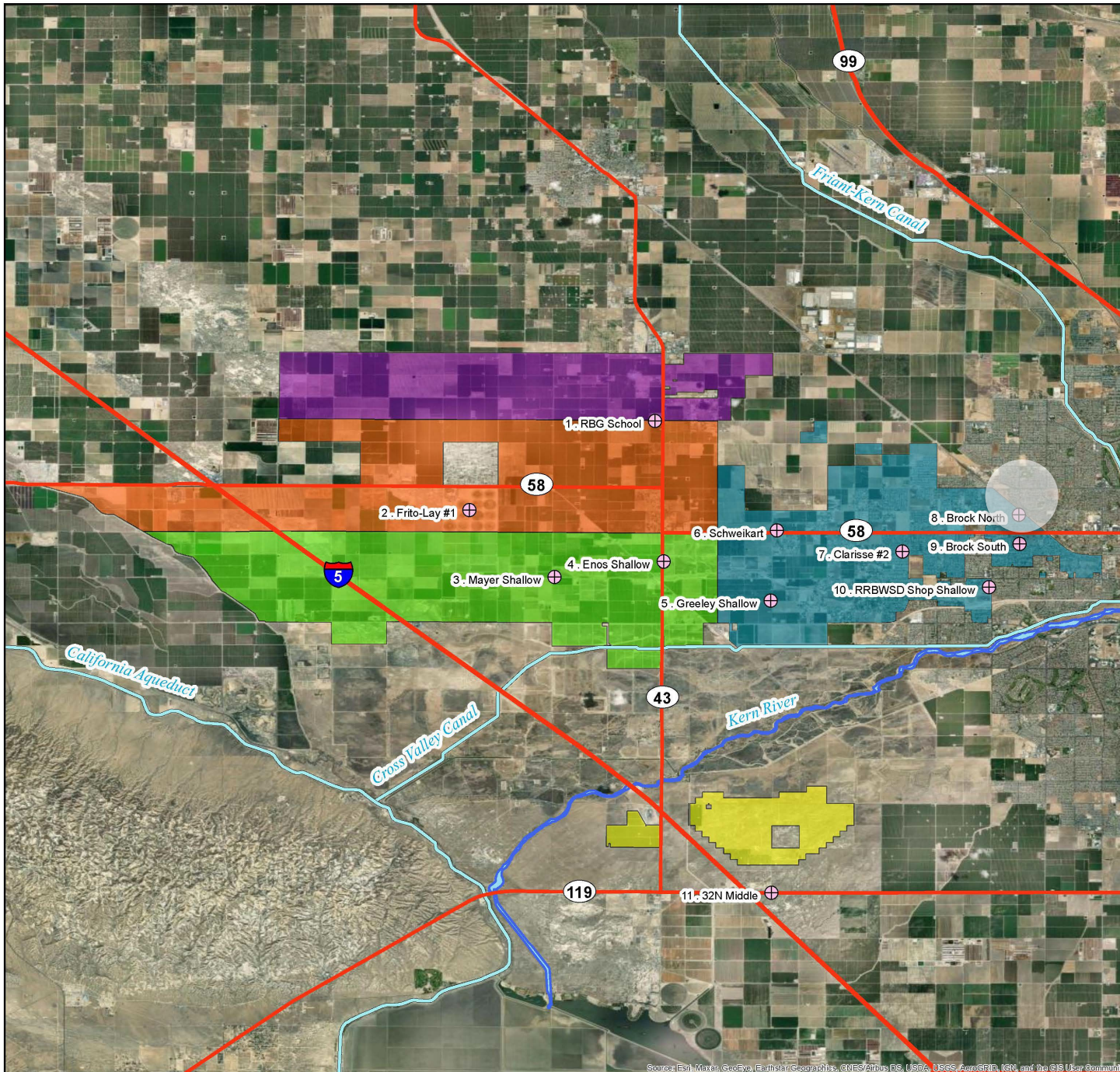
Clarisse #2



Clarisse #2



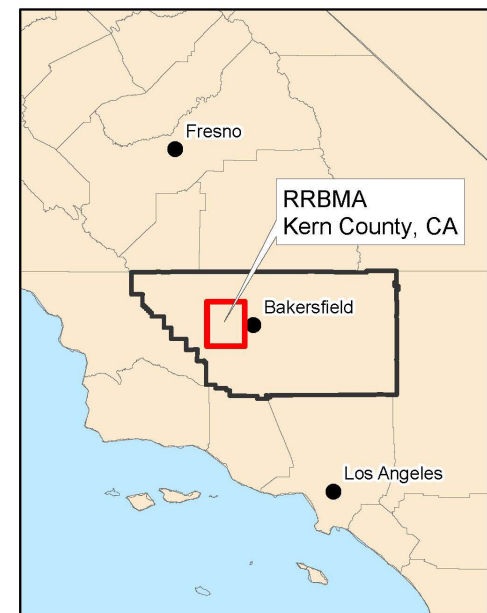
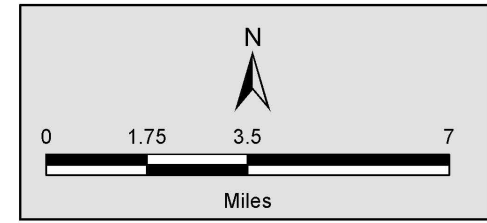
RRBMA Monitoring Areas - Water Quality Wells



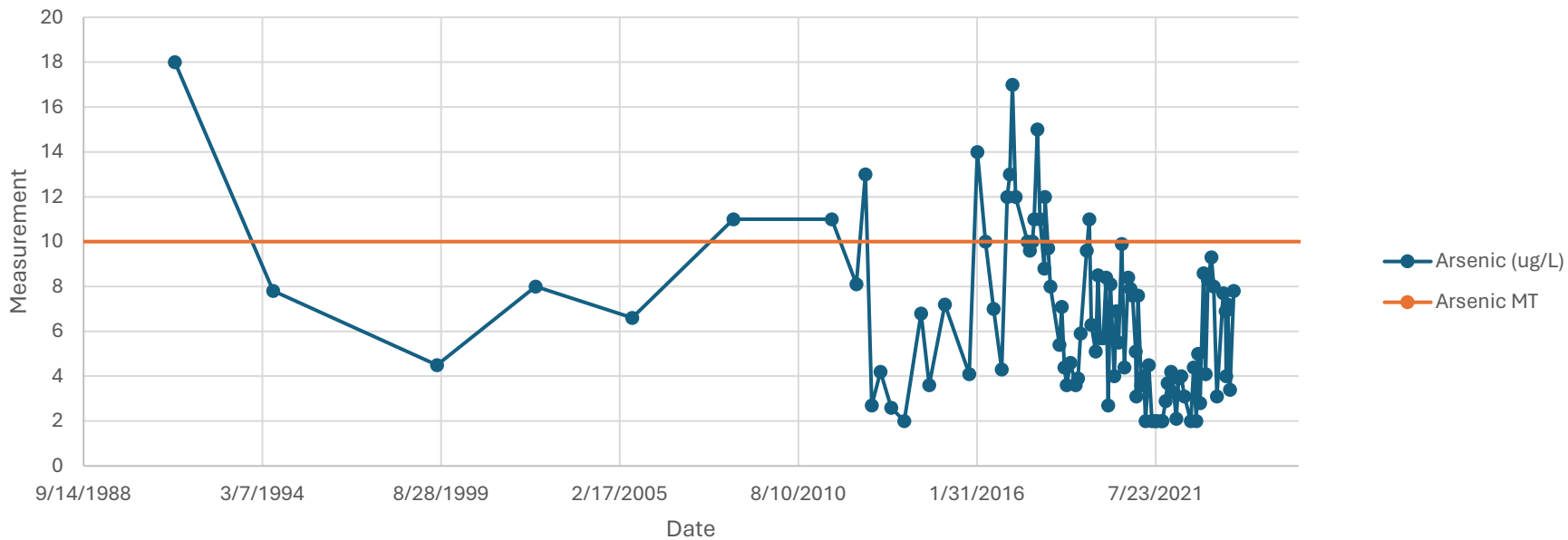
Legend

- ⊕ RRBMA RMW (Water Quality)
- ▭ Kern River
- ▭ North Monitoring Area
- ▭ Central Monitoring Area
- ▭ South Monitoring Area
- ▭ East Monitoring Area
- ▭ South of the River Monitoring Area
- Major Highways
- Major Conveyance Facilities

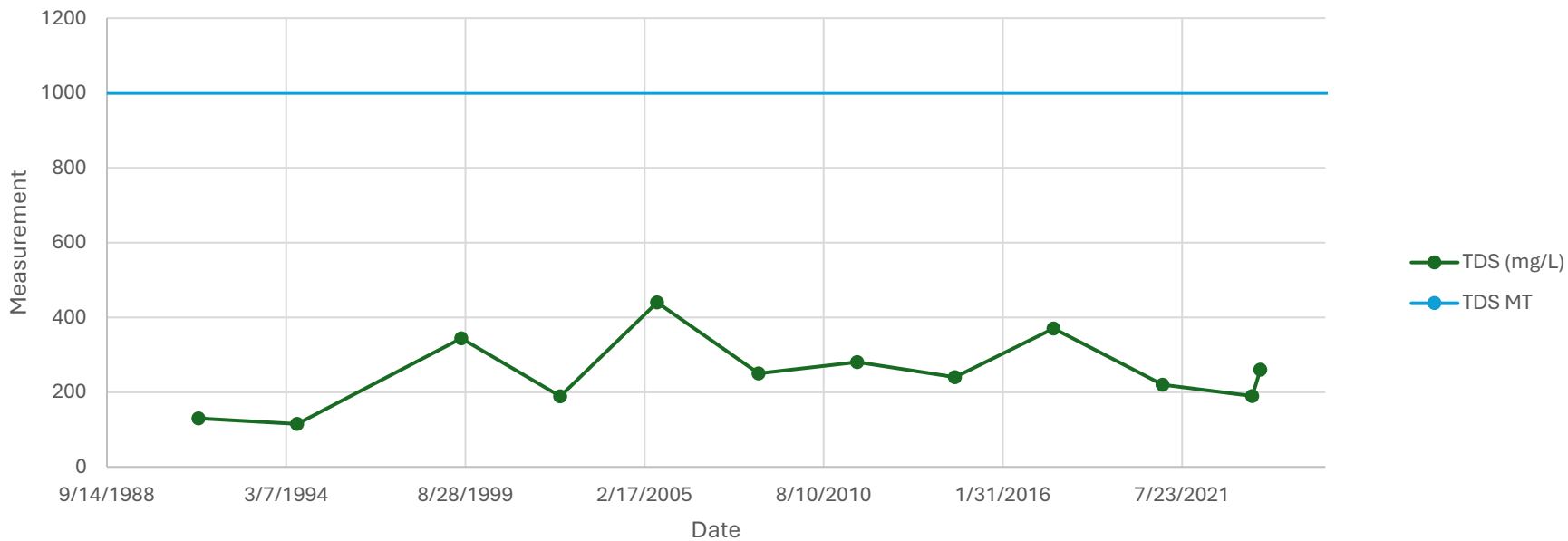
RMW = Representative Monitoring Well



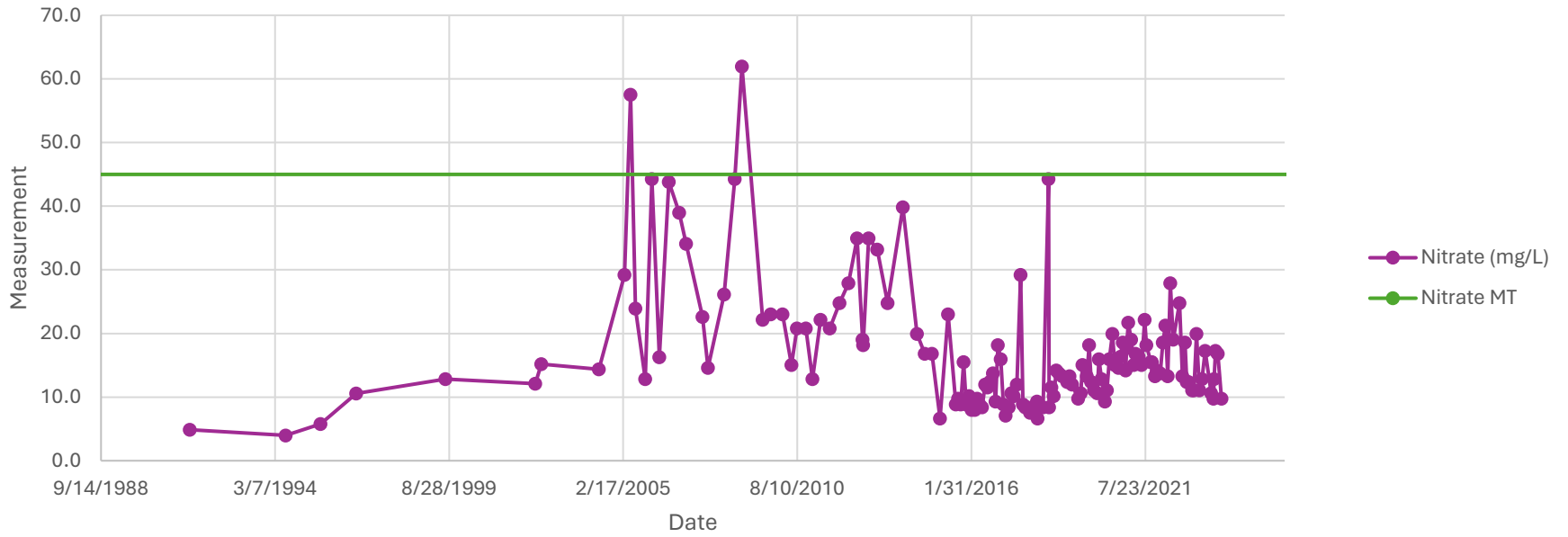
Brock North



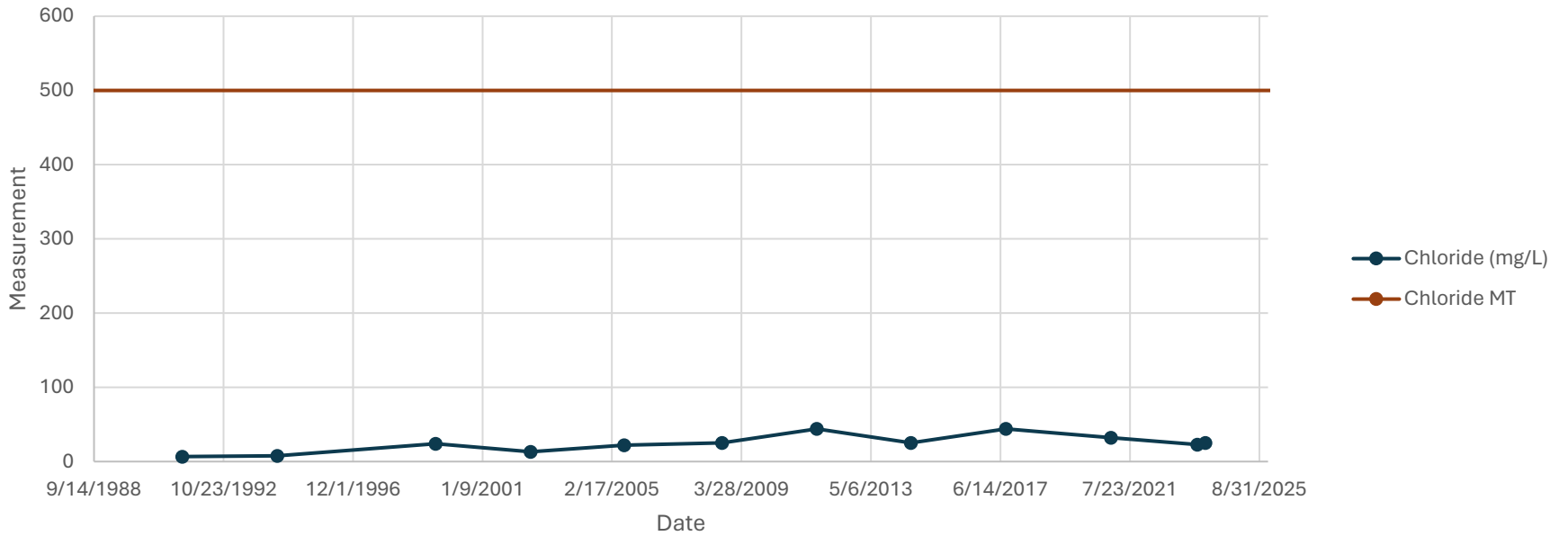
Brock North



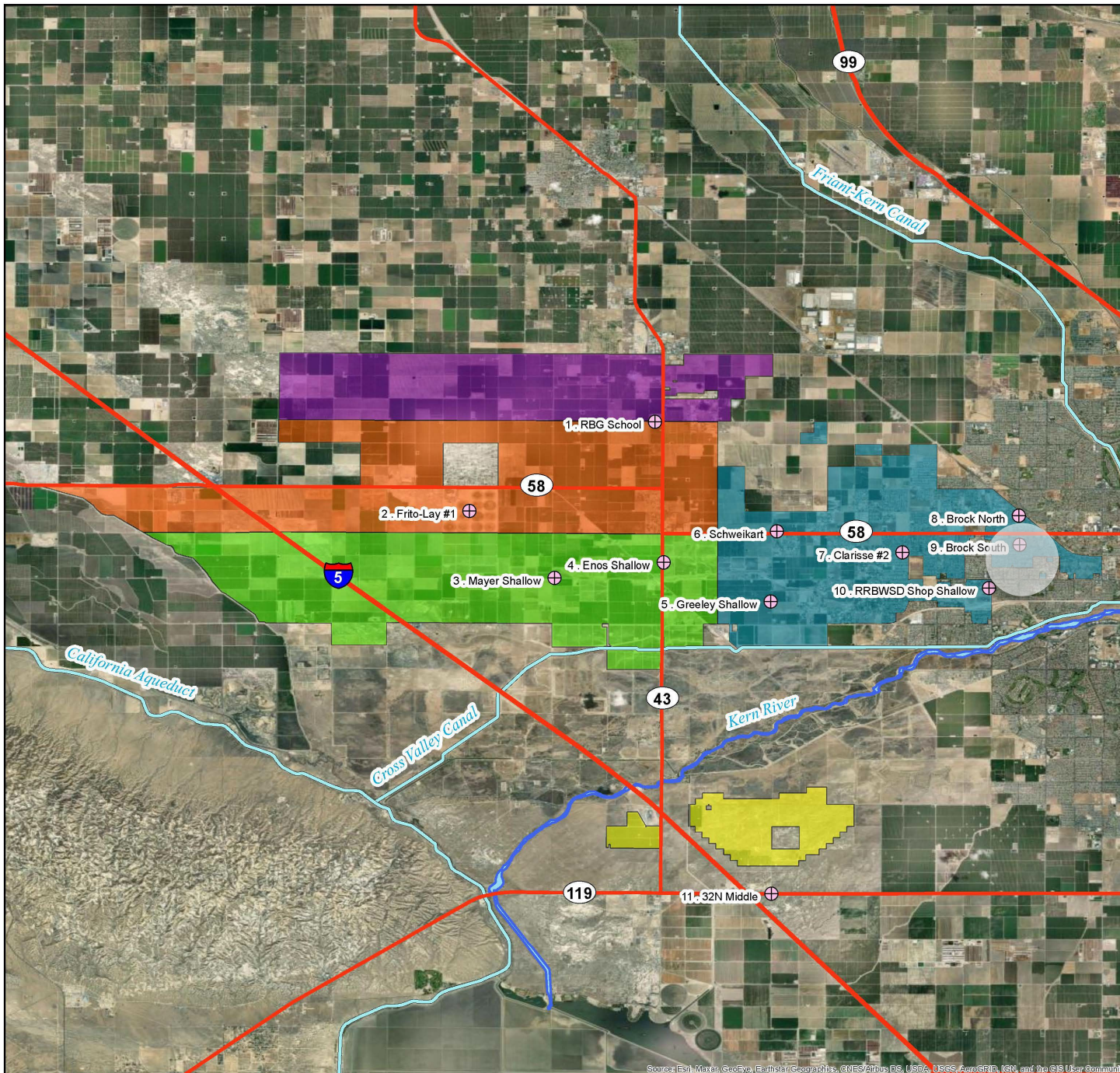
Brock North



Brock North



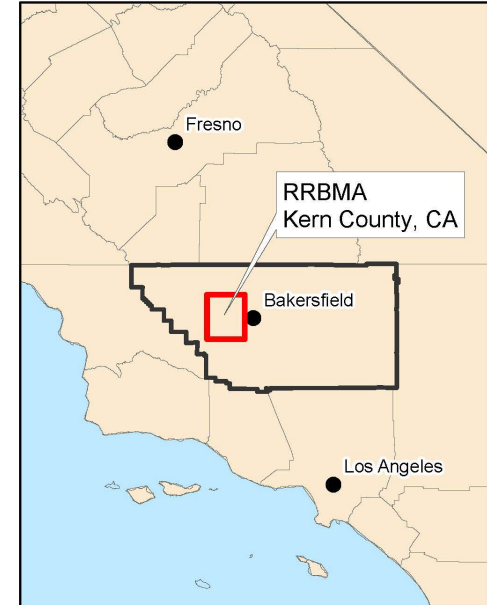
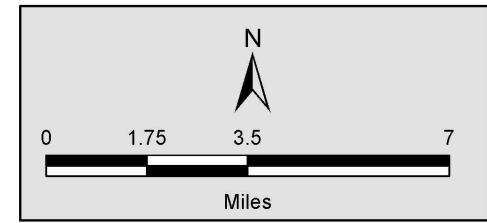
RRBMA Monitoring Areas - Water Quality Wells



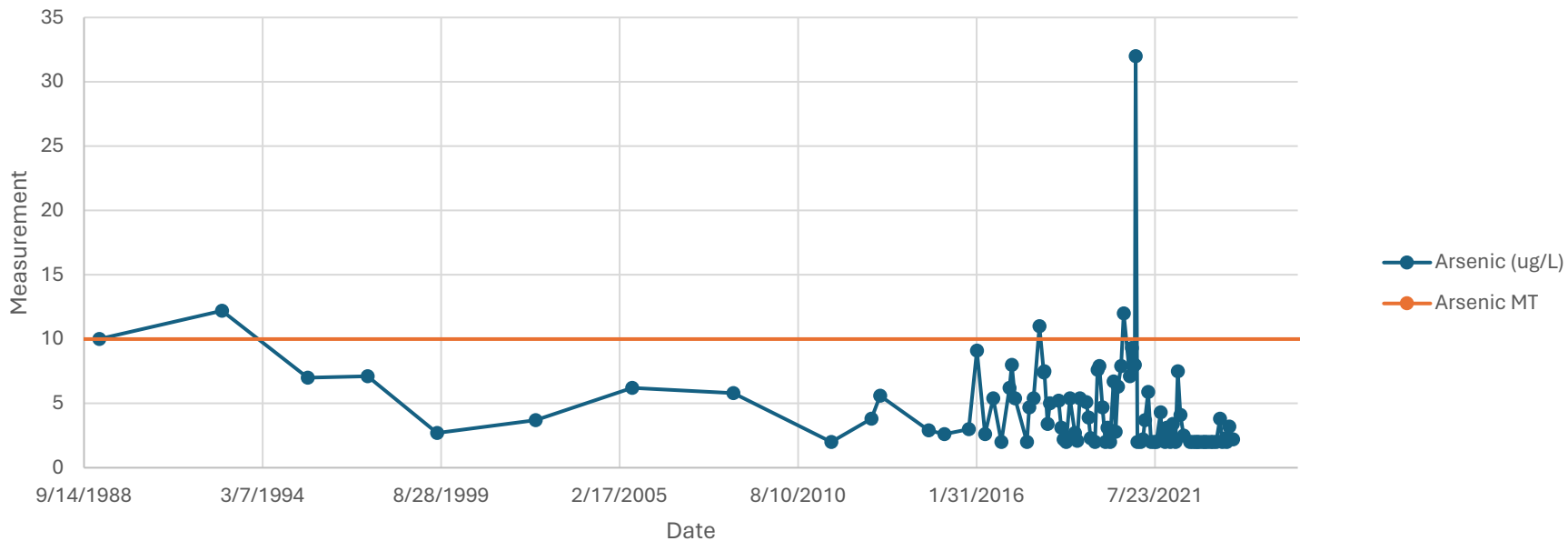
Legend

- ⊕ RRBMA RMW (Water Quality)
- Blue line Kern River
- Purple box North Monitoring Area
- Orange box Central Monitoring Area
- Green box South Monitoring Area
- Blue box East Monitoring Area
- Yellow box South of the River Monitoring Area
- Red line Major Highways
- Light blue line Major Conveyance Facilities

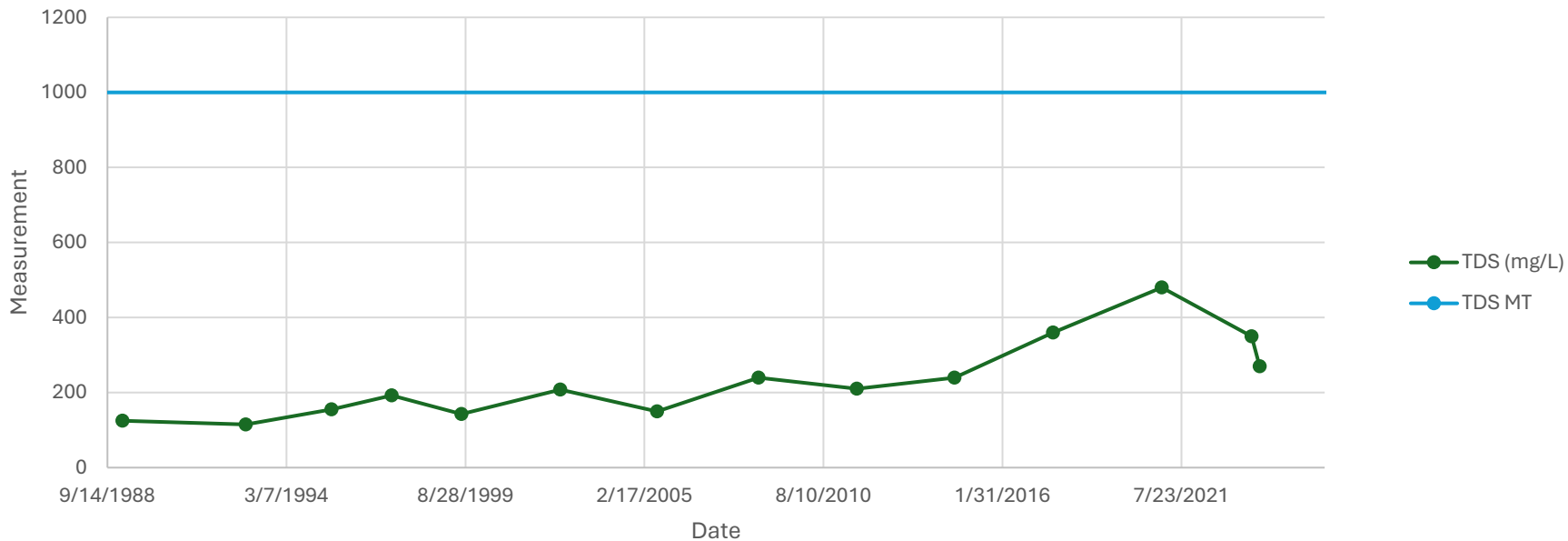
RMW = Representative Monitoring Well



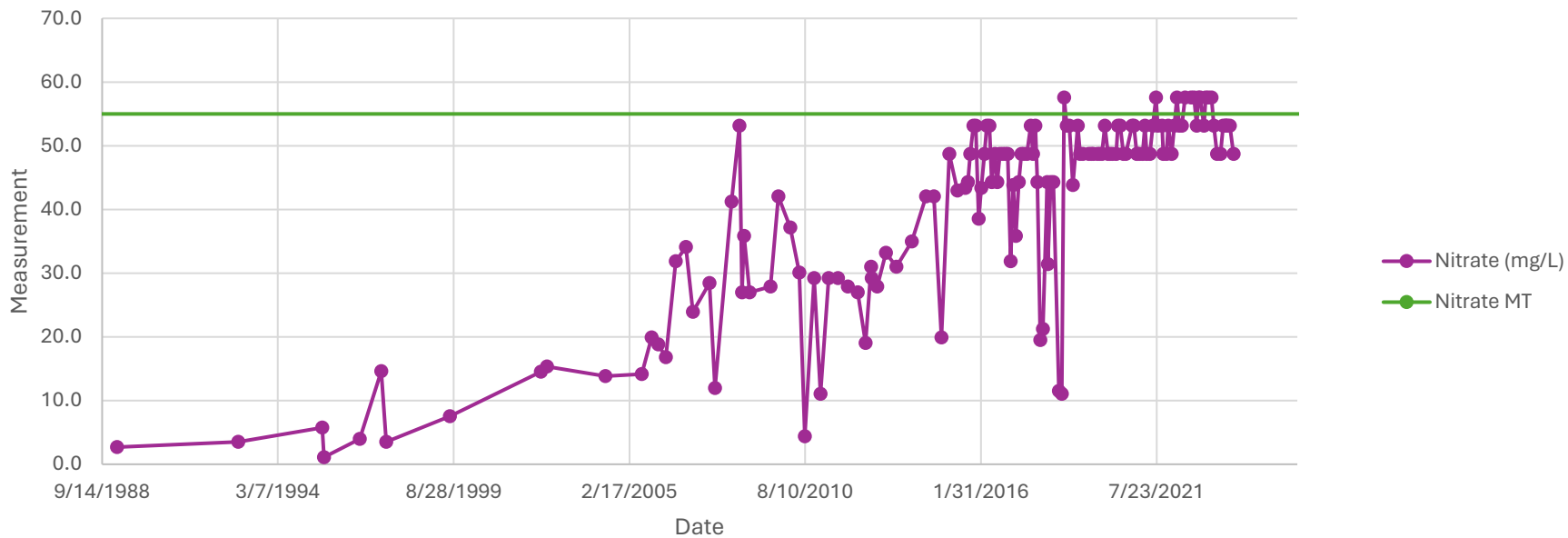
Brock South



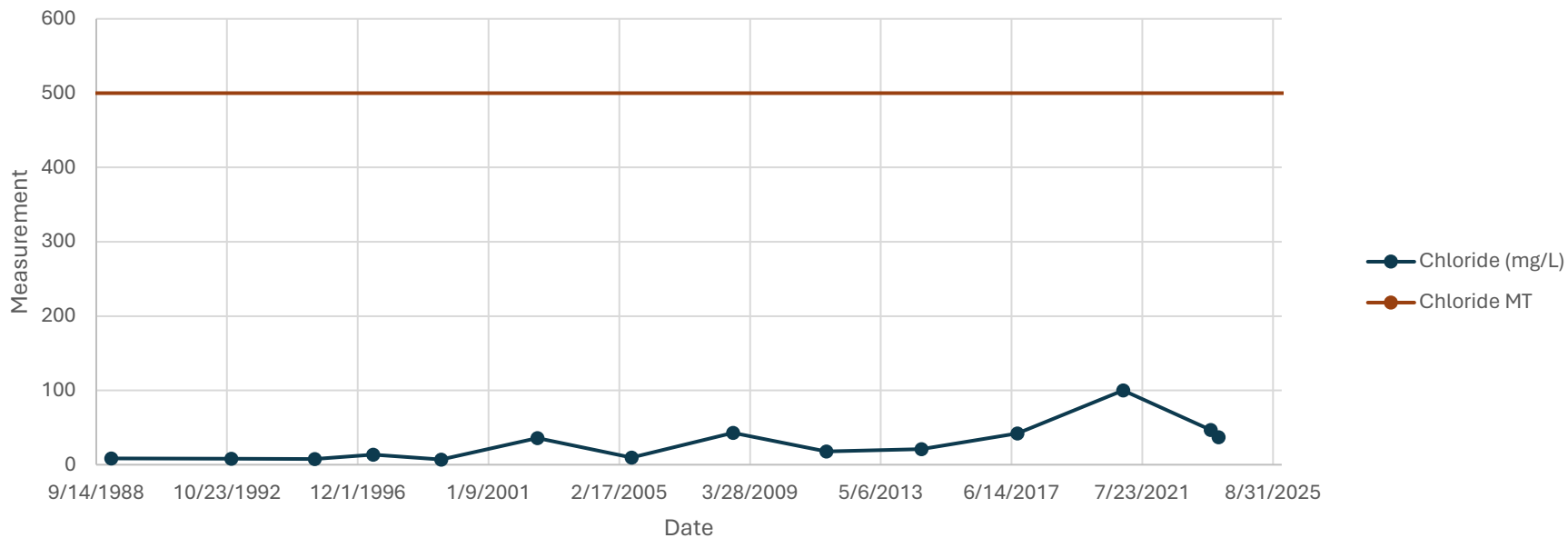
Brock South



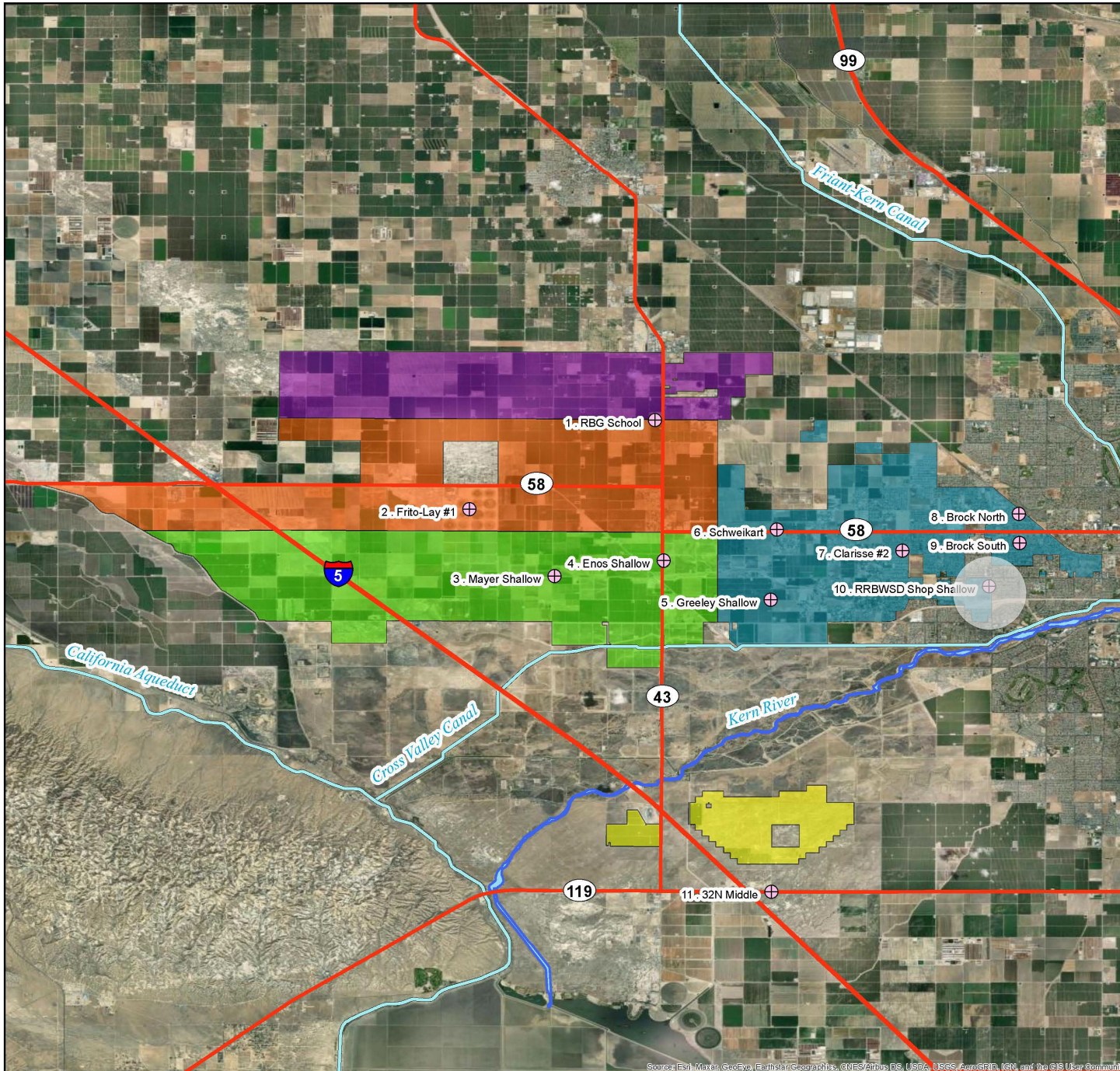
Brock South



Brock South



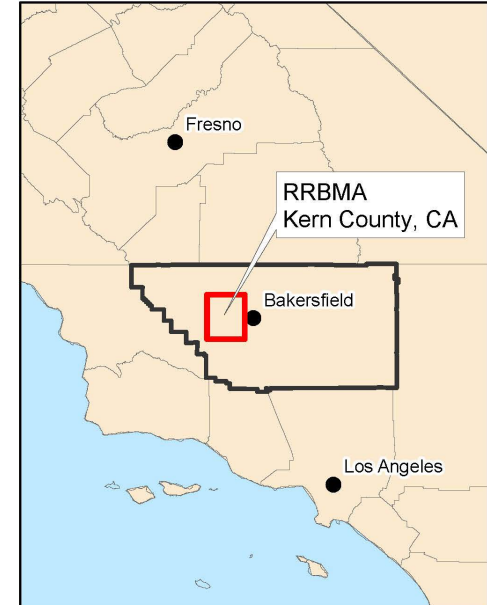
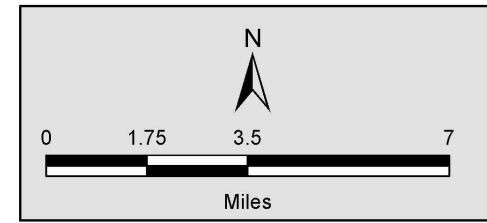
RRBMA Monitoring Areas - Water Quality Wells



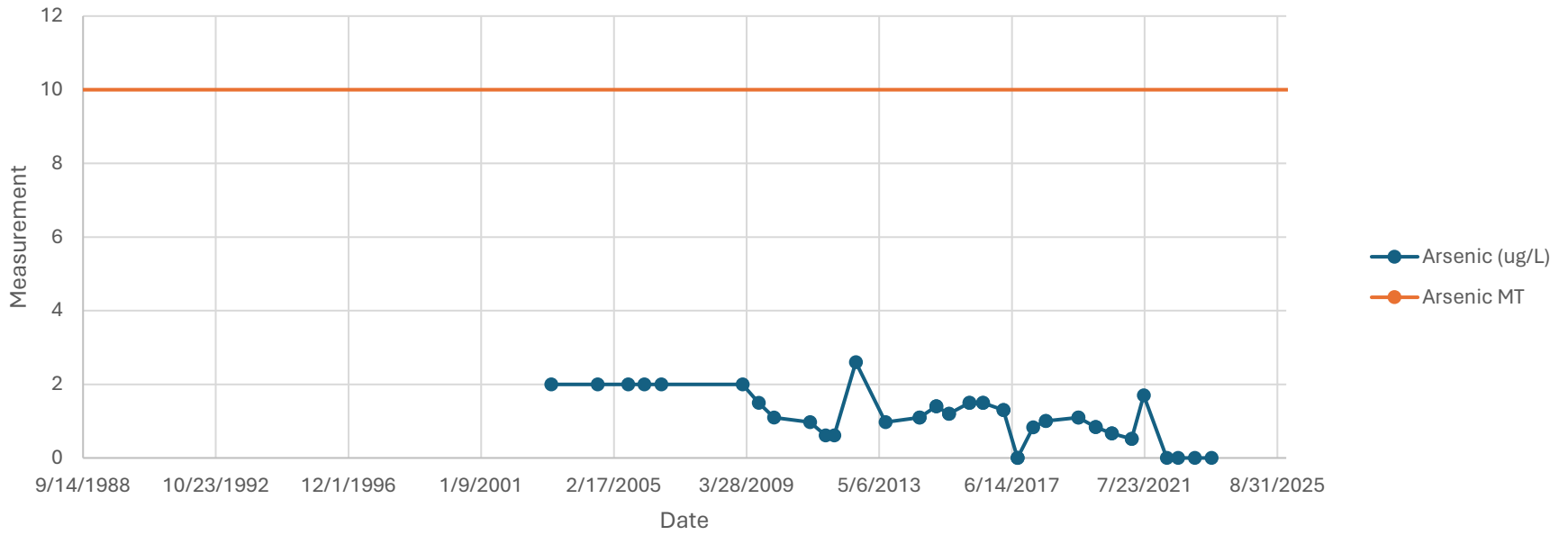
Legend

- ⊕ RRBMA RMW (Water Quality)
- ▭ Kern River
- ▭ North Monitoring Area
- ▭ Central Monitoring Area
- ▭ South Monitoring Area
- ▭ East Monitoring Area
- ▭ South of the River Monitoring Area
- ▬ Major Highways
- ▬ Major Conveyance Facilities

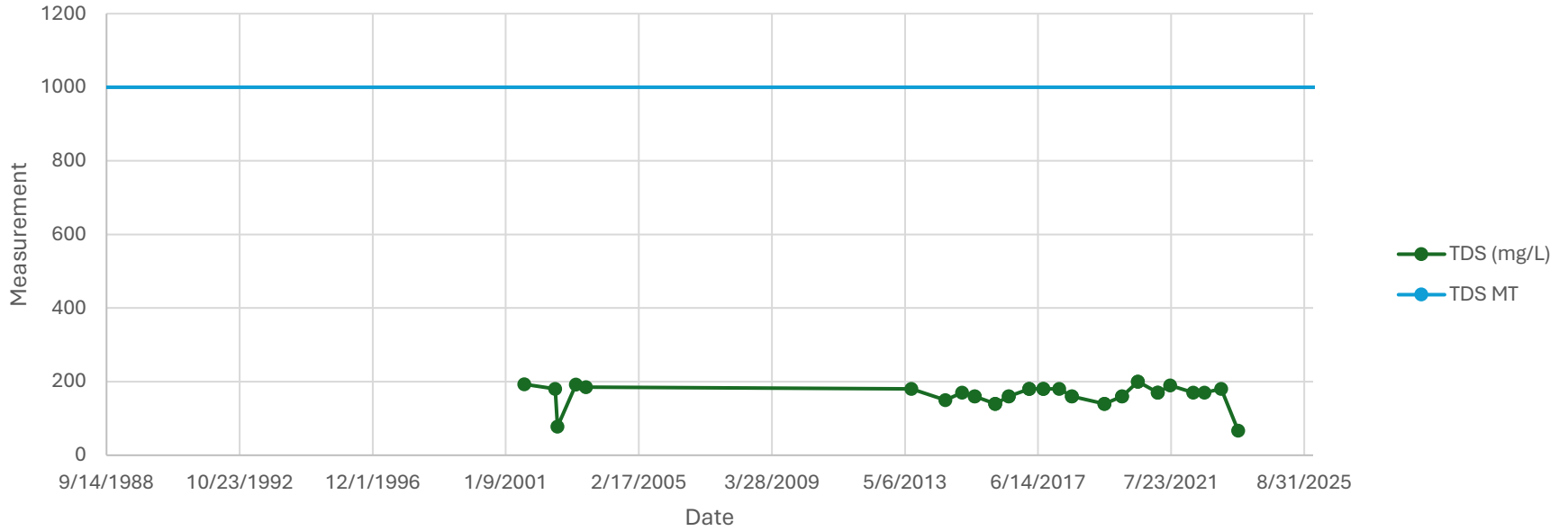
RMW = Representative Monitoring Well



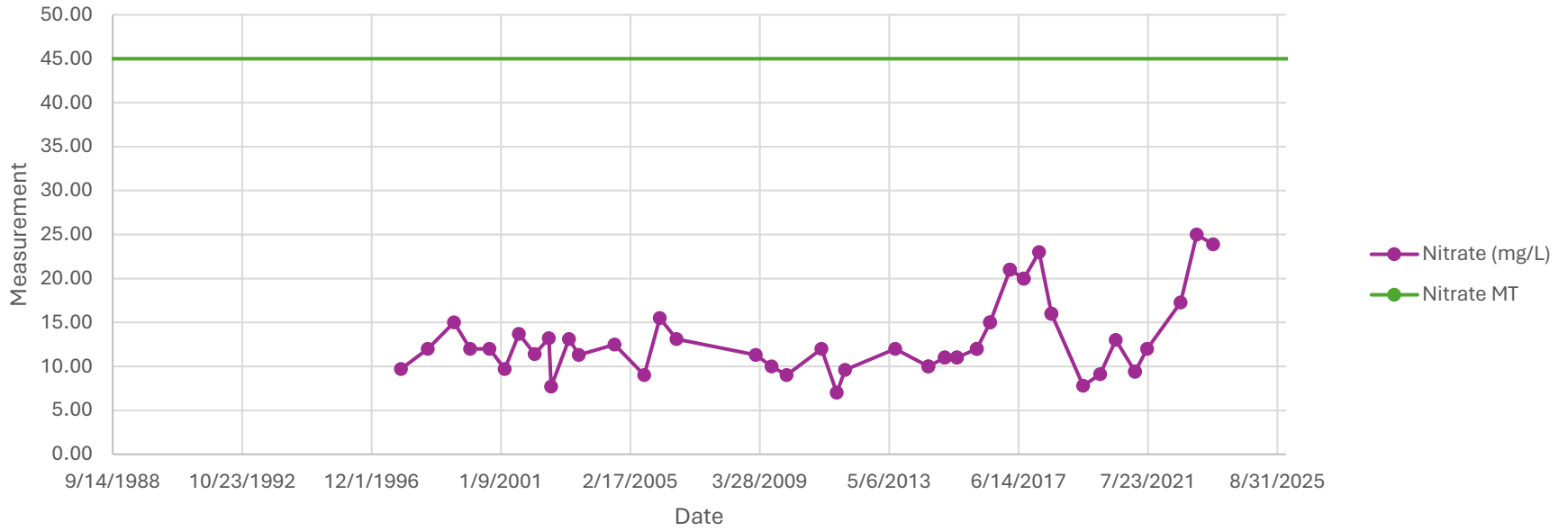
RRB Shop Shallow



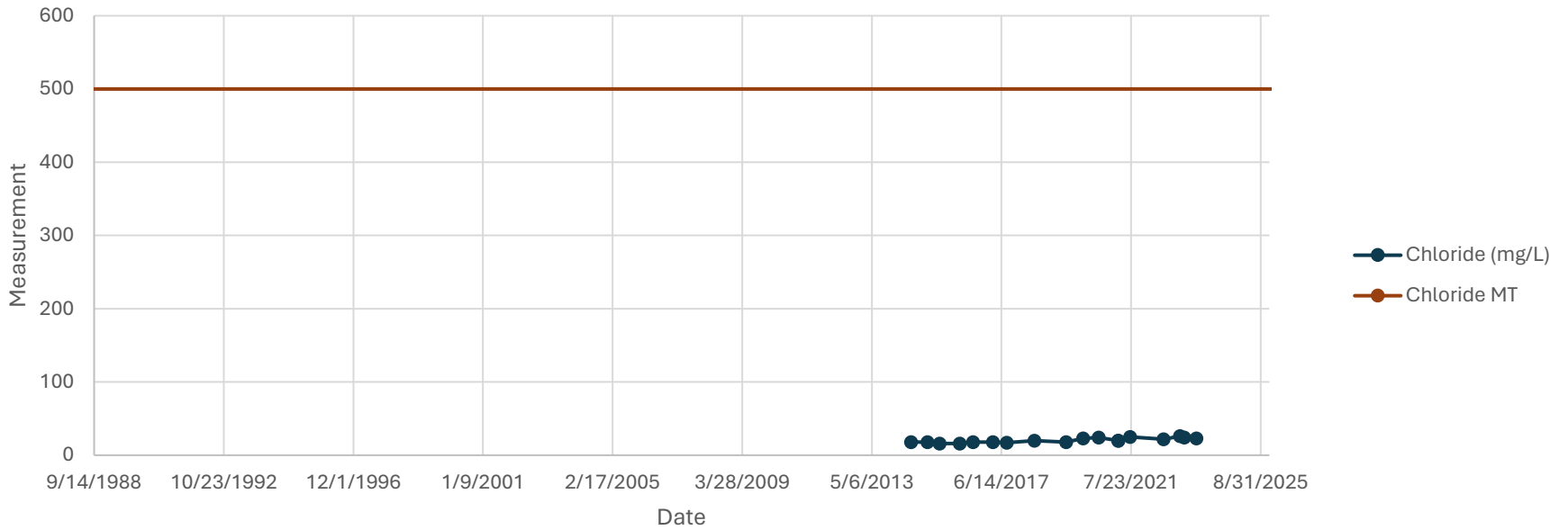
RRB Shop Shallow



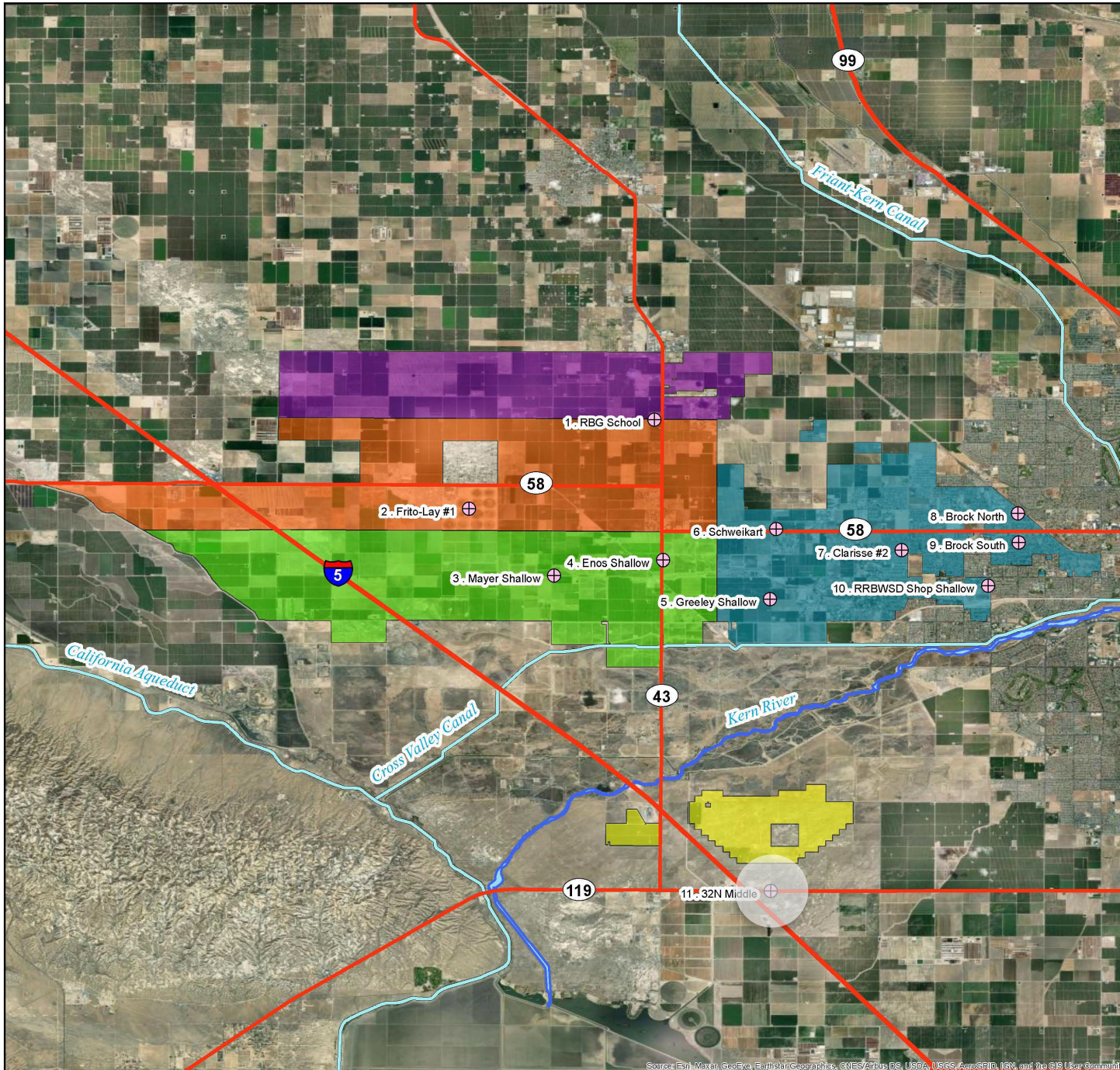
RRB Shop Shallow



RRB Shop Shallow



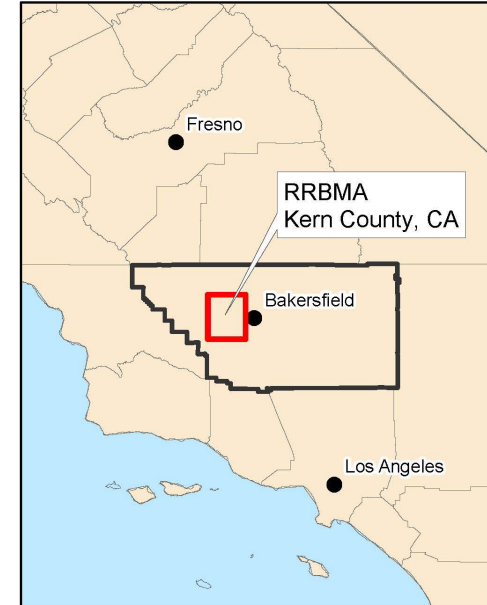
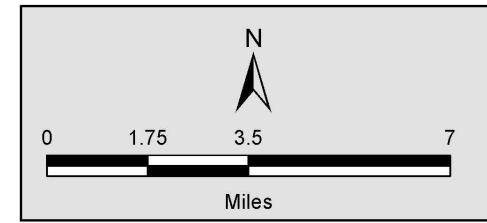
RRBMA Monitoring Areas - Water Quality Wells



Legend

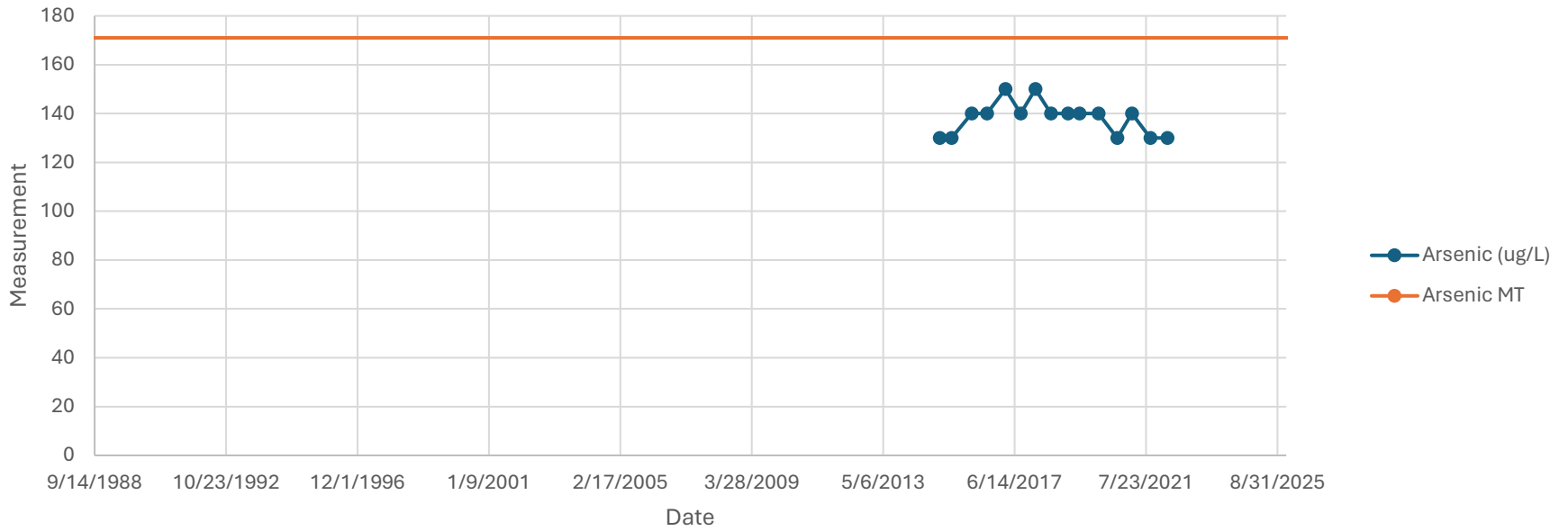
- ⊕ RRBMA RMW (Water Quality)
- Blue line Kern River
- Purple box North Monitoring Area
- Orange box Central Monitoring Area
- Green box South Monitoring Area
- Blue box East Monitoring Area
- Yellow box South of the River Monitoring Area
- Red line Major Highways
- Light blue line Major Conveyance Facilities

RMW = Representative Monitoring Well

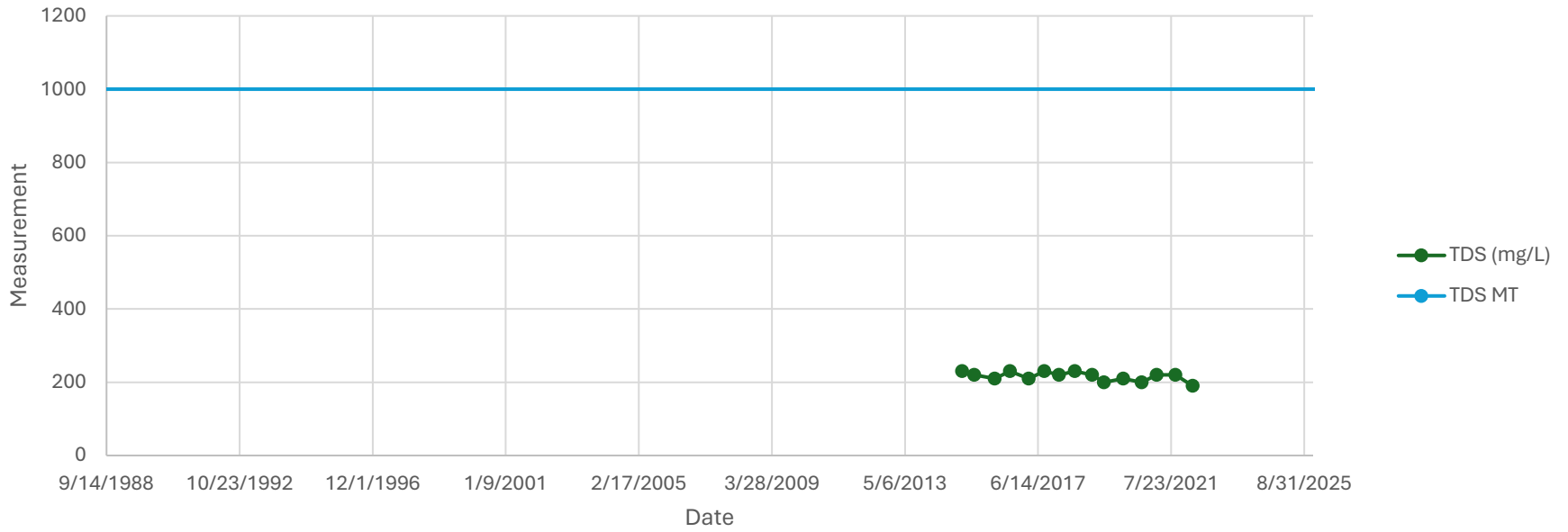


Source: Esri, Maxar, GeoEye, Earthstar Geographics, CNES/Airbus DS, USDA, USGS, AeroGRID, IGN, and the GIS User Community

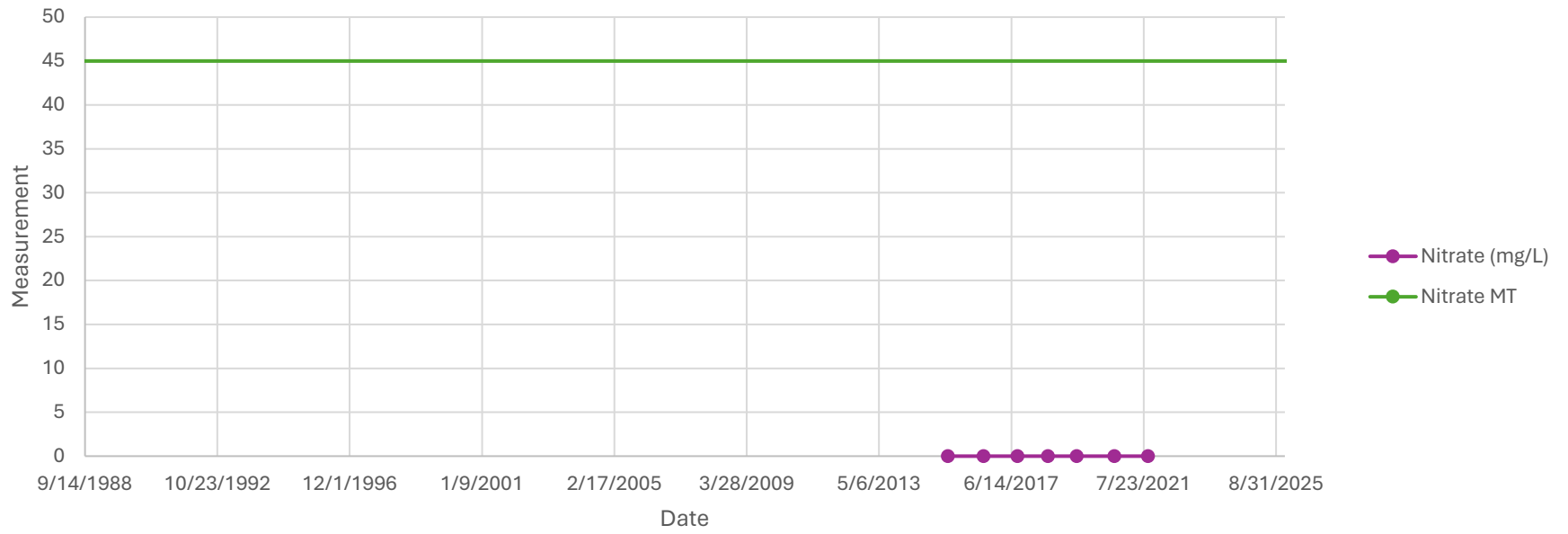
32 N Deep



32 N Deep



32 N Deep



32 N Deep

