



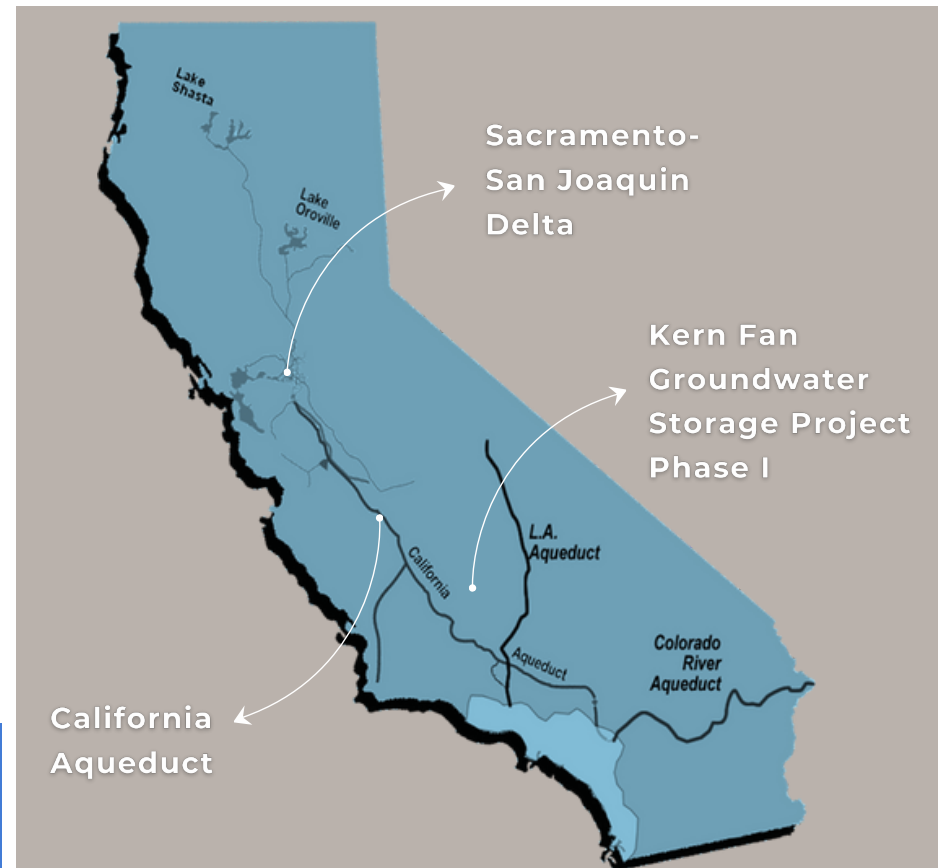
West Enos Pilot Project
August 2023 - Bakersfield, CA

Kern Fan Groundwater Storage Project Phase I

Implementation by the Groundwater Banking Joint Powers Authority, a joint effort between Rosedale-Rio Bravo Water Storage District and Irvine Ranch Water District.

Phase I Project Overview

- **Construction and operation of 350 acres of recharge basins, recovery wells, and water conveyance infrastructure in Kern County, California.**
- **Storage capacity of approximately 28,000 acre-feet of groundwater supplies.**
- **Annual Yield of 2,482 acre-feet.**
- **Drought Supply of 6,000 acre-feet.**



www.kernfanproject.com

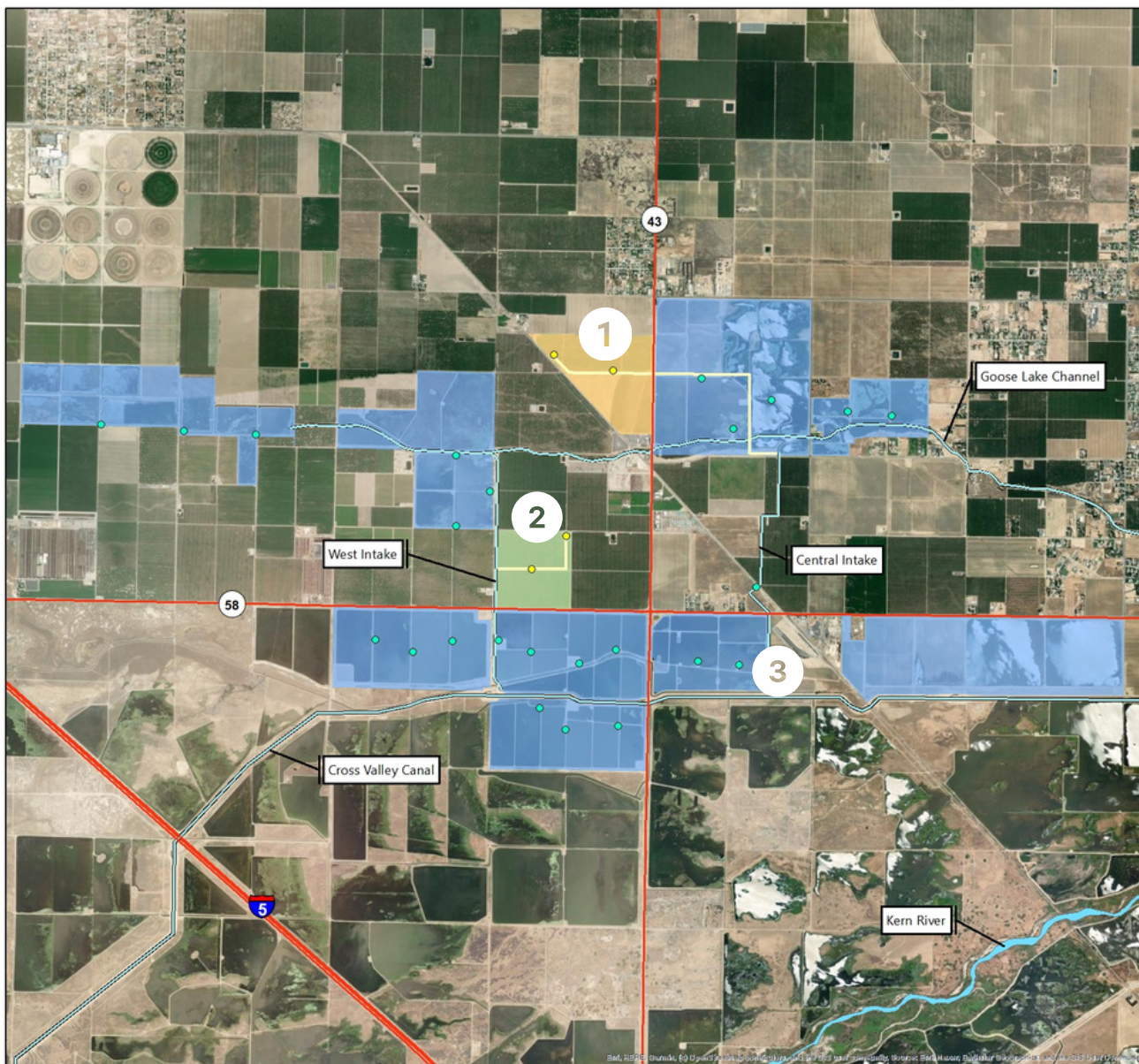


(661)589-6045



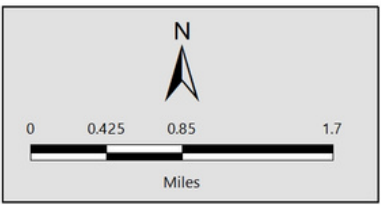
Kern Fan Project Phase I - West Enos & Stockdale North Project Location Bakersfield, CA

- 1**
West Enos
Recharge and
Recovery
- 2**
Stockdale North
Recharge and
Recovery
- 3**
Central Intake
Pumping Plant



Legend

- West Enos Recharge
- Stockdale North Recharge
- Existing Conjunctive Use Facilities
- Proposed Project Wells
- Existing Wells
- Proposed New Collection Pipeline
- Conveyance Facilities
- 15



Kern Fan Groundwater Storage Project Phase I Project Map