



DAILY ET & IRRIGATION MANAGEMENT TOOL

Land IQ has been providing field-by-field monthly evapotranspiration (ET) and precipitation results to irrigation districts (Districts) and Groundwater Sustainability Agencies (GSAs) since 2016. This tool takes ET and precipitation to the daily timestep, providing results in 1-2 days, allowing growers to better manage their water.

GROWER PORTAL

- Claim fields
- Assign an entity for viewing (Farm Manager or Landowner)
- View claimed fields only
- Track water use against a user-defined target or allocation
- Download daily ET and precipitation by field

ENTITY ACCESS

- View only assigned fields
- Track water use against the grower defined target or allocation
- Download daily ET and precipitation

ADMINISTRATOR PORTAL

- View all claimed fields
- View field-level data
- Track number of claimed fields
- Track District/GSA water use
- Download daily ET and precipitation

WHAT

All the inputs that make the monthly, 30-day ET deliverable reliable, drive the daily ET tool as well. These inputs include:

- a data driven approach
- use of ground station data
- modeling at the field-level
- use of multiple remotely sensed images
- incorporation of agronomic variables

MONTHLY RESULTS

For consistency, the results of this daily product will match the proven results of the monthly, 30-day ET results that are currently provided to nearly 40 GSAs and Districts.

ACCESS

The grower only has access to the results of their fields, while the administrator-level has access to all fields and is provided with area-wide (e.g., GSA, Districts, or similar entity) summaries of accumulated consumption, precipitation, grower participation, crop type, field-level results, etc.

GROWER LEVEL ACCESS

- Claim fields
- Assign an entity for viewing (i.e. Farm Manager or Landowner)
- View claimed fields only
- Track water use against a user-defined target or allocation
- Download daily ET and precipitation by field



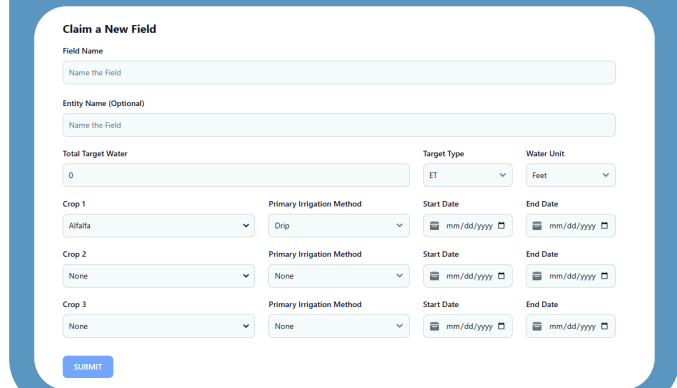
ENTITY LEVEL ACCESS

Provide landowners or farm manager level users access to assigned fields where they may view and download data by identifying an entity level user.

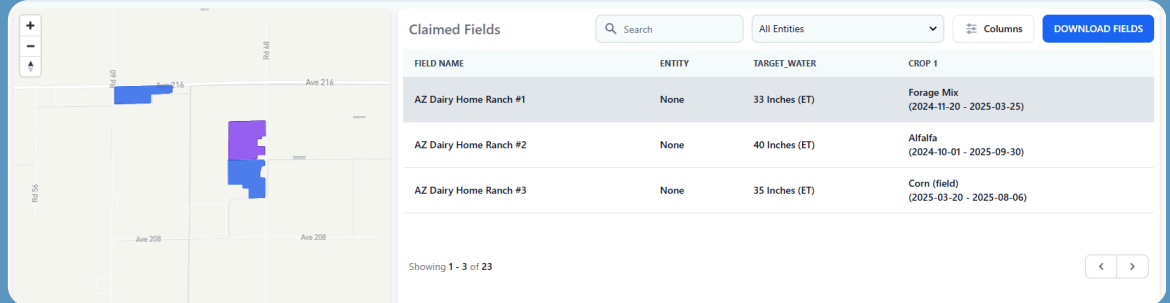
Claim a Field:



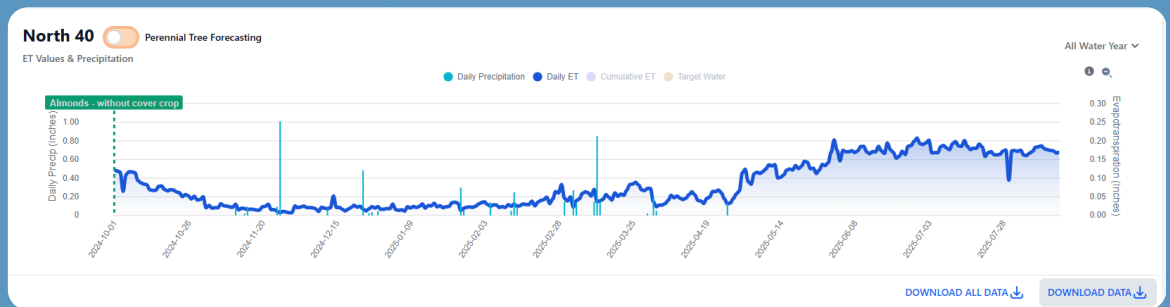
Enter Crop Specific Details:



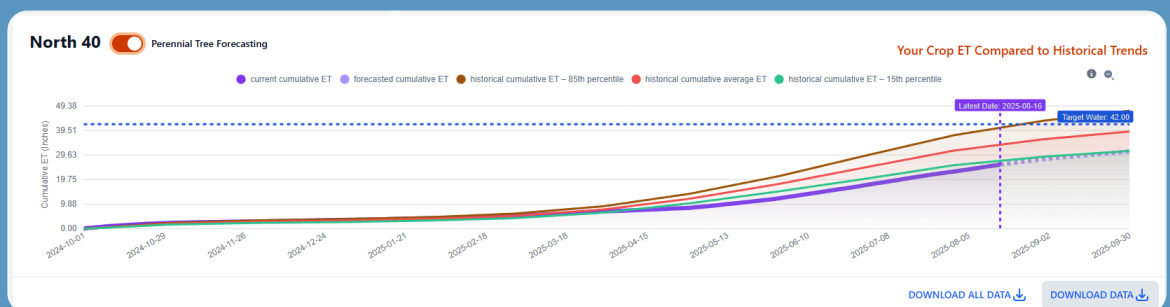
View all claimed fields in spatial and tabular form:



View and download field-level daily ET and precipitation:

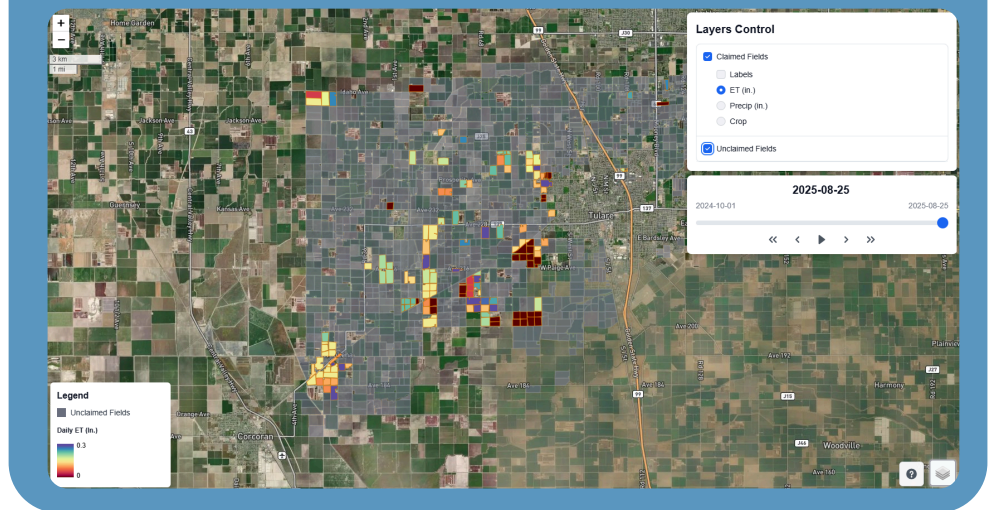


Track field-level water use against a user defined target or historical trends:

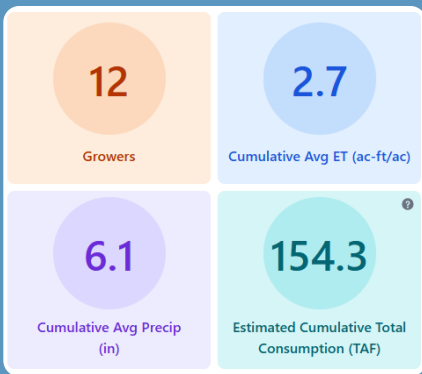


- View all claimed fields
- View field-level data
- Track number of claimed fields
- Track District/GSA water use
- Download daily ET and precipitation

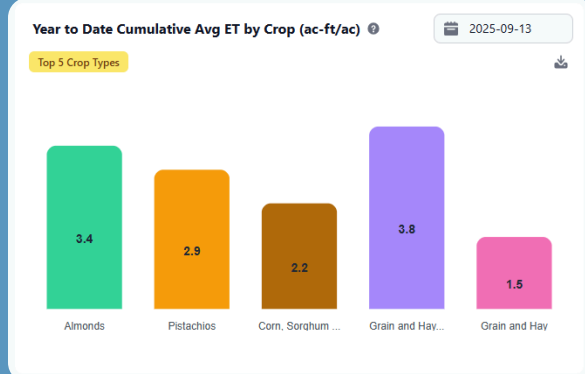
View Claimed Fields in the District/GSA:



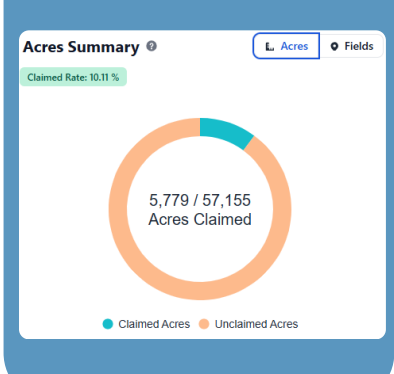
Track District/GSA Level Stats:



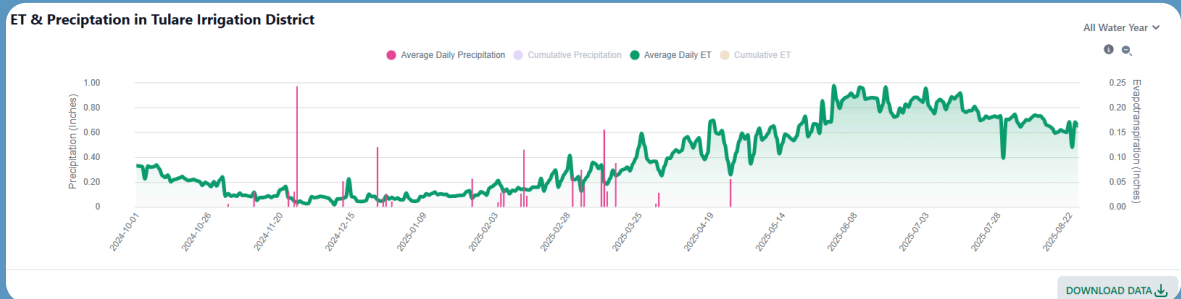
Track and Download ET by Crop Type:



Track Claimed Fields:



View and download district-level daily ET and precipitation:



View and download field-level daily ET and precipitation:

