

NOTICE OF INTENT

Draft Initial Study – Mitigated Negative Declaration

Date: March 12, 2026

To: Responsible and Trustee Agencies, Interested Organizations, and Interested Parties

Lead Agency: Rosedale-Rio Bravo Water Storage District

Subject: Dillard Groundwater Recharge and Solar Array Project Public Draft Initial Study – Mitigated Negative Declaration

Review Period: March 13, 2026 – April 13, 2026

This Notice of Intent (NOI) has been prepared to notify responsible and trustee agencies, interested organizations, and interested parties that the Rosedale-Rio Bravo Water Storage District (Rosedale), as the Lead Agency pursuant to the California Environmental Quality Act (CEQA), has prepared a Draft Initial Study – Mitigated Negative Declaration (IS-MND) for the proposed Dillard Groundwater Recharge and Solar Array Project (project) that is available for review and comment. The 30-day public review period for the Draft IS-MND is from Friday, March 13, 2026, to Monday, April 13, 2026.

Project Location: The project area encompasses 50 acres of Assessor’s Parcel No. (APN) 104-292-09, located approximately 0.6 miles northeast of the intersection of State Route (SR) 43 and SR 58 in unincorporated Kern County. The project also includes approximately 25 miles of power transmission lines in the vicinity of APN 104-292-09. Several of the proposed transmission lines are within 0.5 miles of the unincorporated community of Calder’s Corner. No hazardous waste sites identified on lists compiled pursuant to Government Code Section 65962.5 are present on the project site. Figure 1 provides an overview of the project area.

Project Description: The Dillard Groundwater Recharge and Solar Array Project would involve the construction and operation of a groundwater recharge basin, including two to three recharge ponds supplied by Rosedale’s existing Conjunctive Use Program. The project would involve the installation of associated inflow pipelines, interbasin control structures, and berms constructed from onsite materials. An elevated solar array would be constructed above the ponds to generate power for existing Rosedale facilities and reduce evaporation, supported by a battery energy storage system (BESS) located northeast of the ponds. The BESS would include battery enclosures, inverters, transformers, and switchgear, and would store and manage solar-generated electricity. The project would also involve installation of approximately 25 miles of new overhead (and, where required, underground) power lines to convey electricity to a new point of interconnection with Pacific Gas & Electric near Cherry Avenue and SR 58. Construction would occur over approximately 34 months and include grading, trenching, installation of solar and BESS equipment, and power line installation within existing and new easements. Project operation would involve periodic maintenance of the recharge ponds, solar array, and BESS, with minor increases in vehicle trips. Decommissioning of the solar and

battery systems would occur at the end of their useful life in accordance with applicable regulations at that time.

Environmental Determination: Pursuant to the requirements of CEQA, an Initial Study was prepared for the project. The Initial Study describes the environmental impacts of the project and suggests mitigation measures where necessary to reduce impacts to biological resources, cultural resources, and geology and soils to less-than-significant levels. The proposed mitigation measures will be implemented as part of the project to ensure the project will not generate a significant adverse impact on the environment during construction and operation. Based on this assessment, a Mitigated Negative Declaration has been prepared.

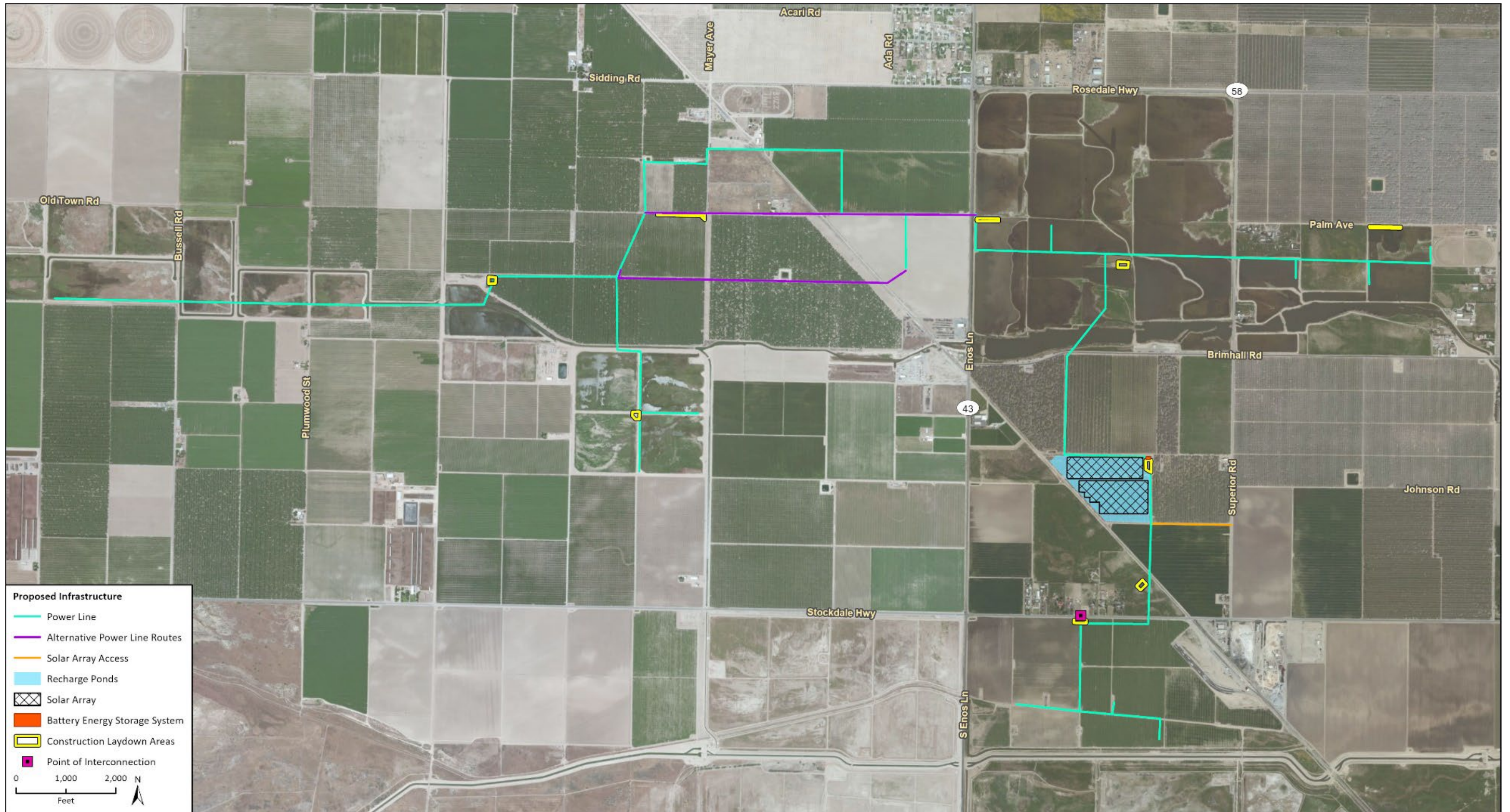
Public Review and Comments: In accordance with Section 15073 of the CEQA Guidelines, the Draft IS-MND is available for public review from March 13, 2026, through 5:00 pm on April 13, 2026, at:

- Rosedale Rio-Bravo Water Storage District website: <https://www.rrbwsd.com/notices/#ceqa>
- Rosedale Rio-Bravo Water Storage District office: 849 Allen Road, Bakersfield, California 93314

Written comments on the Draft IS-MND must be received by Rosedale at the address provided below, no later than 5:00 pm on April 13, 2026.

Dan Bartel, Engineer-Manager
Rosedale-Rio Bravo Water Storage District
849 Allen Road
Bakersfield, California 93314
DBartel@rrbwsd.com

Figure 1 Project Site Overview



Imagery provided by Esri and its licensors © 2026.

24-16294 EPS
Fig 2 Project Overview